

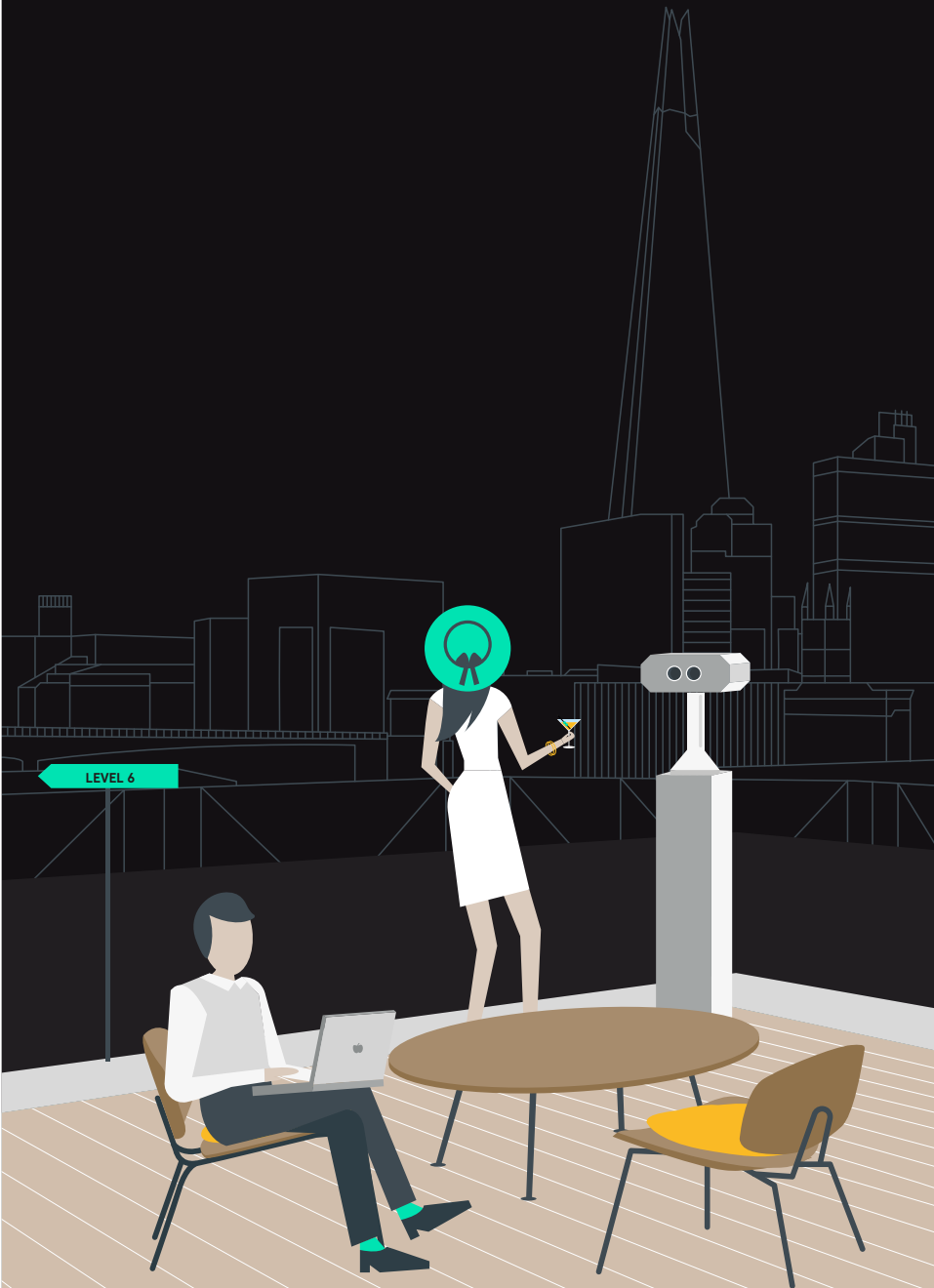


VINTNERS PLACE
LONDON

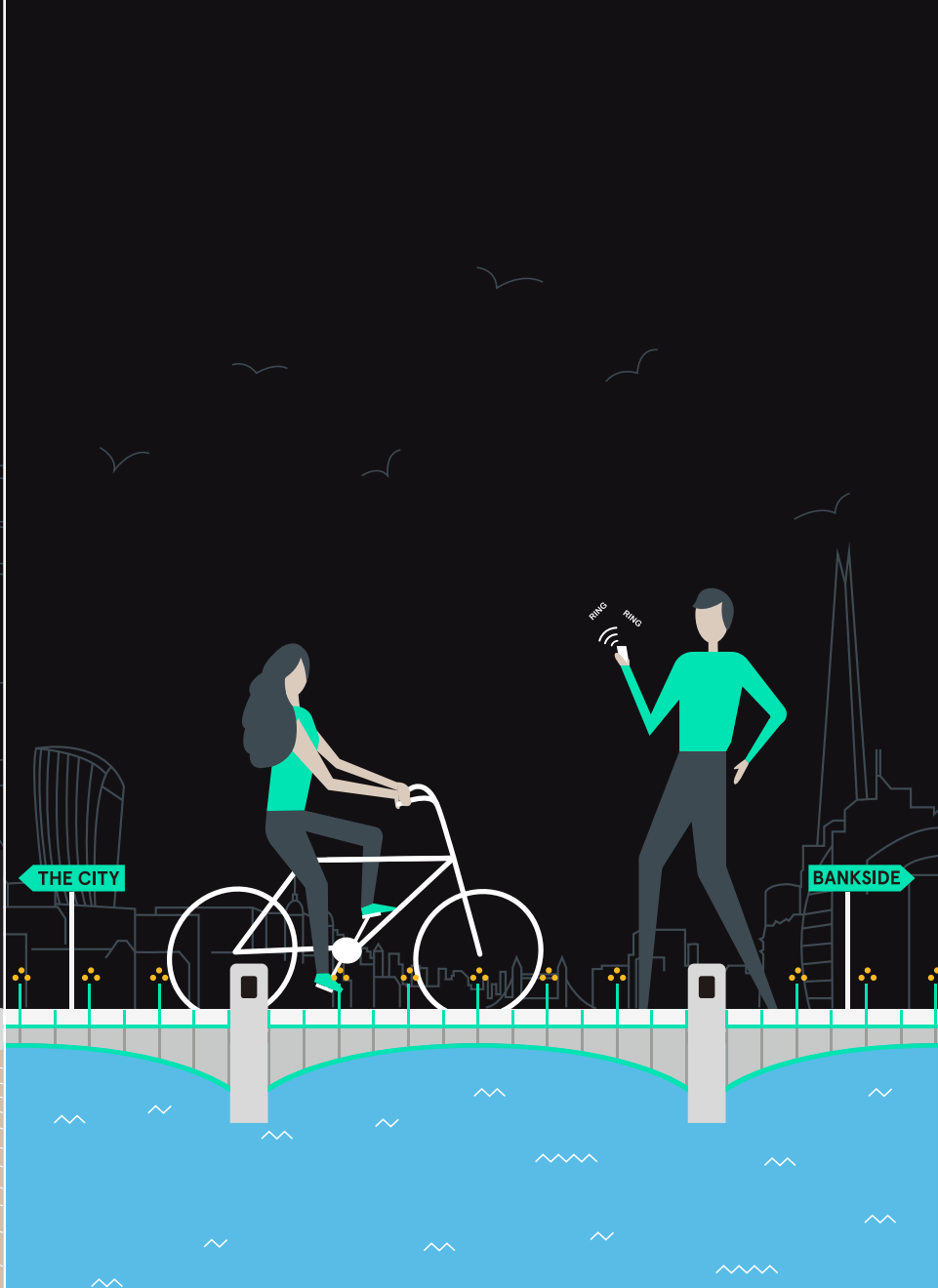
The Building



The Offer



The Location



The Building

A BEAUTIFUL BUILDING PROVIDING
A FIRST CLASS EXPERIENCE FOR ITS OCCUPIERS

COFFEE SHOP



The Building Key Facts

01

Vintners Place

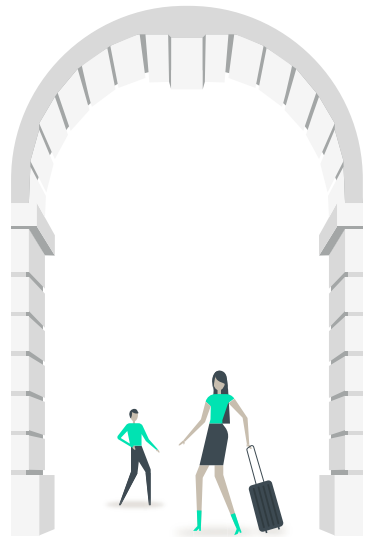
is a landmark asset on the River, which combines a mix of Grade A office accommodation, leisure, fitness and retail.



02

The building comprises 275,000 sq ft

over lower ground, ground and six upper floors, centered around a large internal atrium.



05

The Atrium base

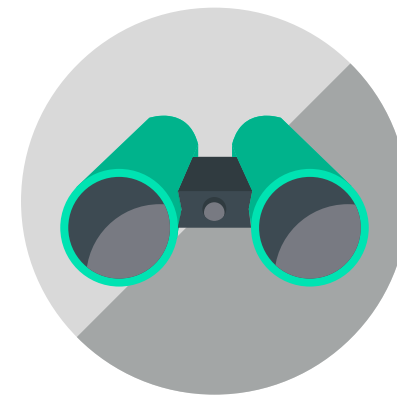
is home to a large open plan breakout area, and benefits from an onsite café.



03

Extensive roof terrace

on the 6th floor that benefits from exceptional river views both East and West.



06

Cycling storage and car parking available,

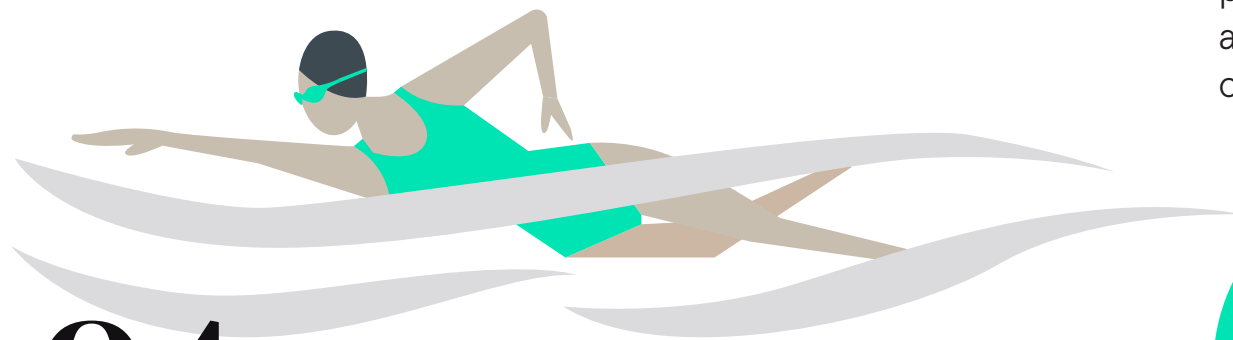
as well as shower and changing rooms.



04

Exclusive gymnasium and 20m swimming pool

for sole use of the occupiers in the building.





VINTNERS PLACE

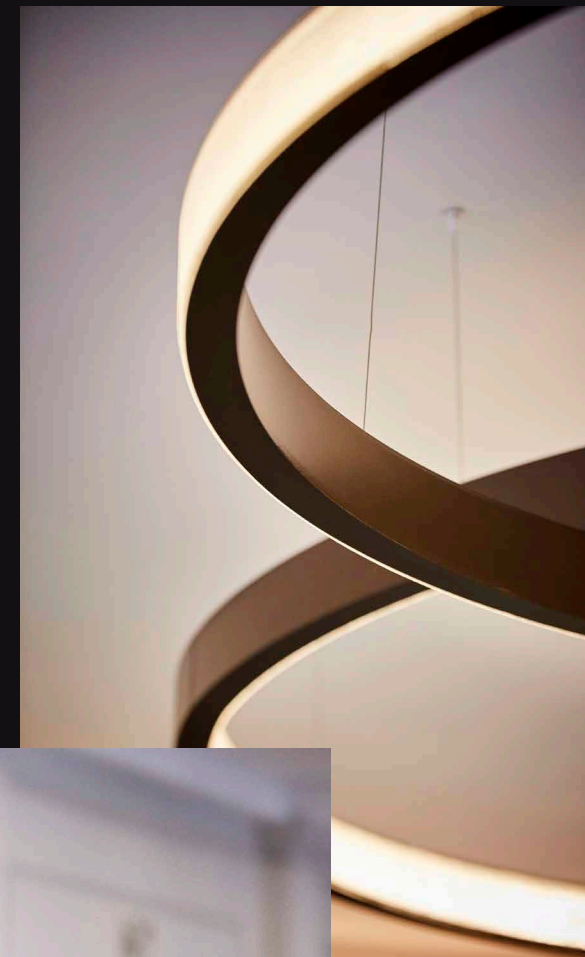
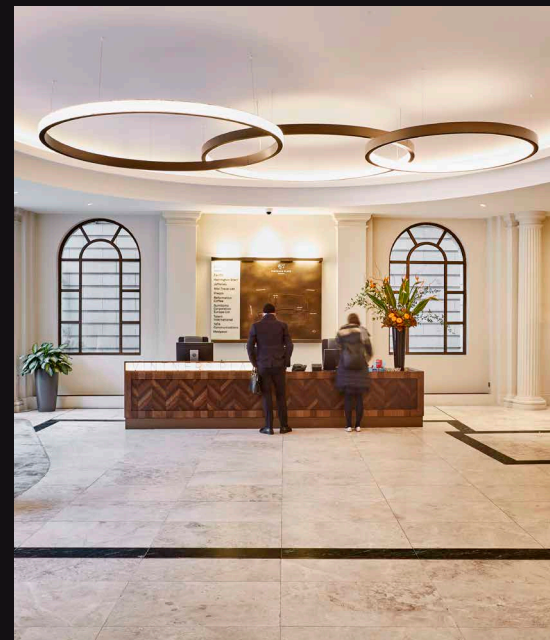
VINTNERS PLACE

VINTNERS PLACE

The Reception



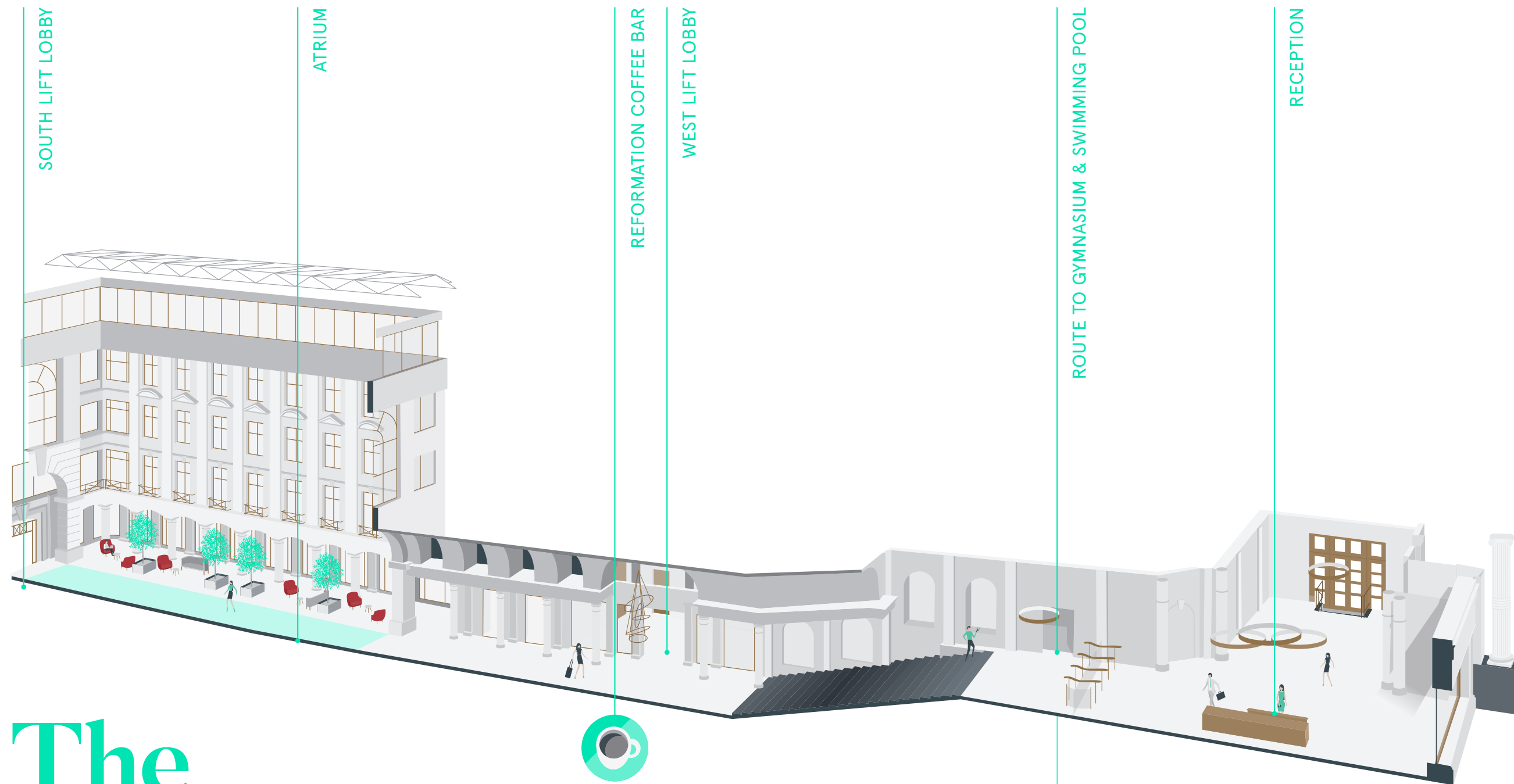
“ Recently refurbished to a high standard, you can relax in a welcoming atmosphere “



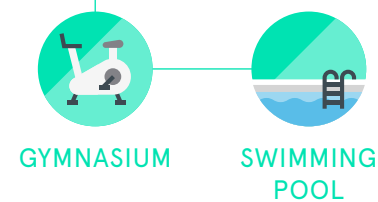
The Welcome

A FRIENDLY AND PROFESSIONAL
RECEPTION ENSURES A
SEAMLESS VISIT FOR GUESTS
AND STAFF ALIKE





The Ground Floor







The Gymnasium



Reformation Coffee Bar



The Swimming Pool



The Atrium

VINTNERS PLACE

A Unique Lifestyle

VINTNERS PLACE CAN OFFER ITS OCCUPIERS
A UNIQUE WORK/LIFE BALANCE THANKS
TO THE AMENITIES IN THE BUILDING



The Atrium



VINTNERS PLACE

“
The light-flooded atrium
provides the perfect location
for a formal or informal
meeting or a catch up with
a colleague
”

Swimming Pool



“
Dive into 20m of
refreshing water after a
hard day in the office
”

The Terrace

UNINTERRUPTED VIEWS
FROM EAST TO WEST



Indicative CGI of Level 6 terrace looking South East

The Offer

AN OPPORTUNITY TO OCCUPY HIGH QUALITY OFFICES WITH
ONE OF THE MOST ENVIABLE ROOF TERRACES IN LONDON

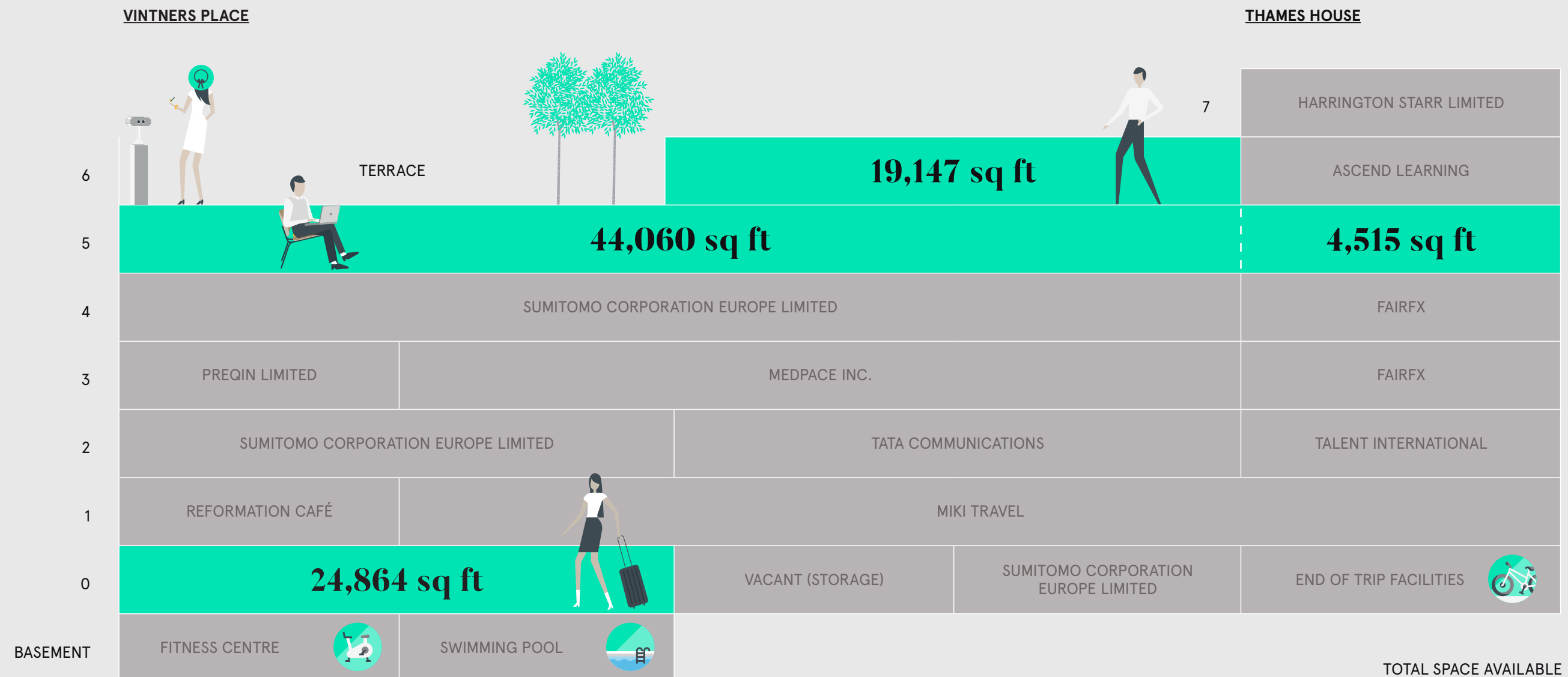
LEVEL 6



VINTNERS PLACE

TOTAL SPACE AVAILABLE

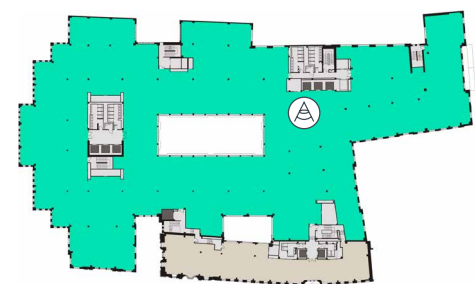
92,586 sq ft



A collaborative space



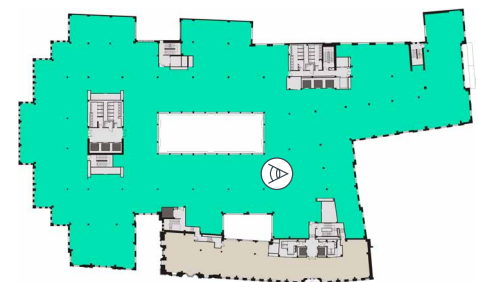
Indicative tenants' fit out



Modern Offices



Indicative tenants' fit out





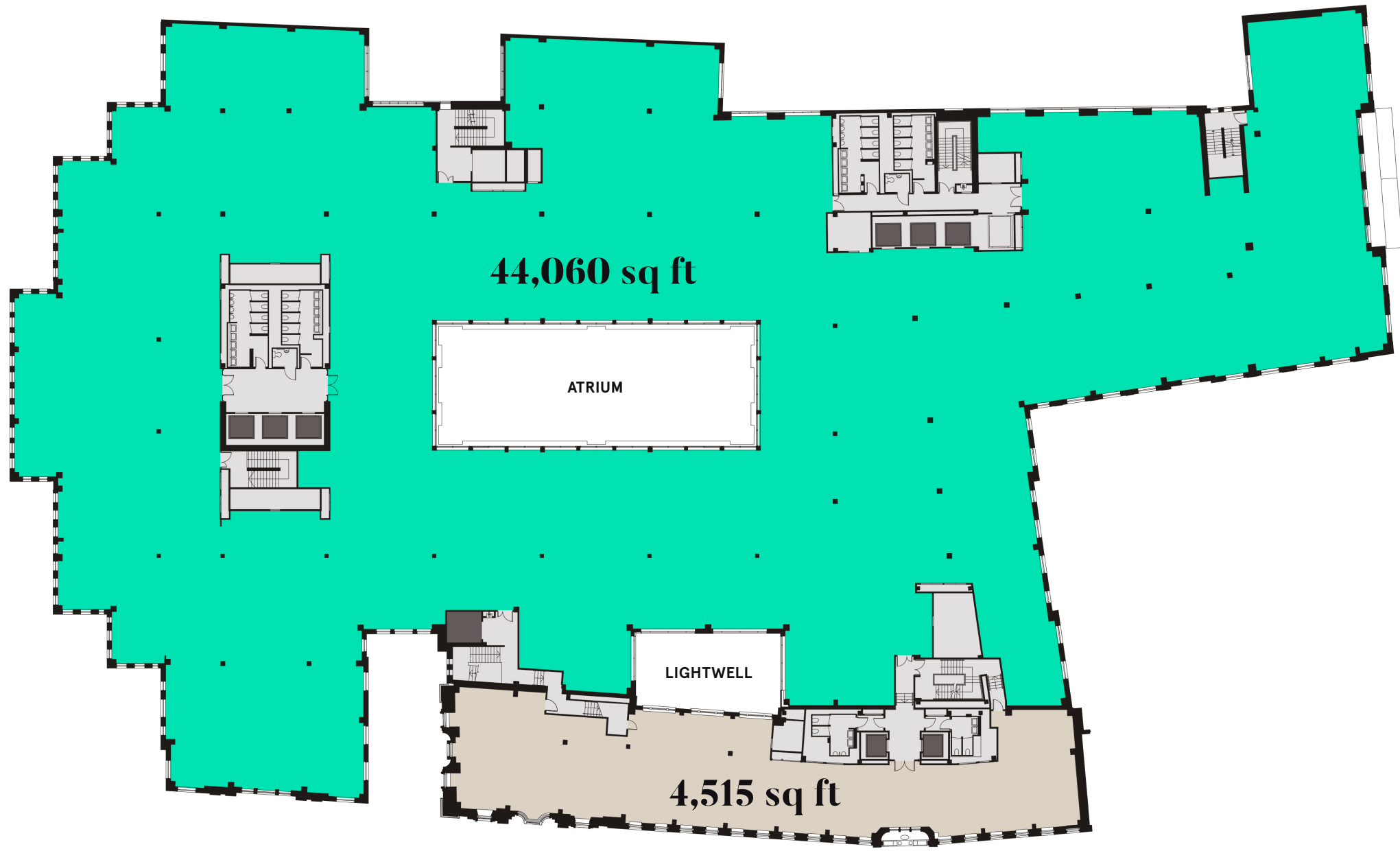
TOTAL AREA
48,575 SQ FT (4,512 SQ M)

KEY ● VINTNERS PLACE ● THAMES HOUSE ● CORE ● LIFT

Level 5



RIVER THAMES



UPPER THAMES STREET

Floor plans not to scale, for indicative purposes only.

● 4,515 sq ft (419 sq m) available



Level 6

TOTAL AREA
19,147 SQ FT (1,779 SQ M)

KEY ● VINTNERS PLACE ● CORE ● LIFT ● TERRACE



Floor plans not to scale, for indicative purposes only.



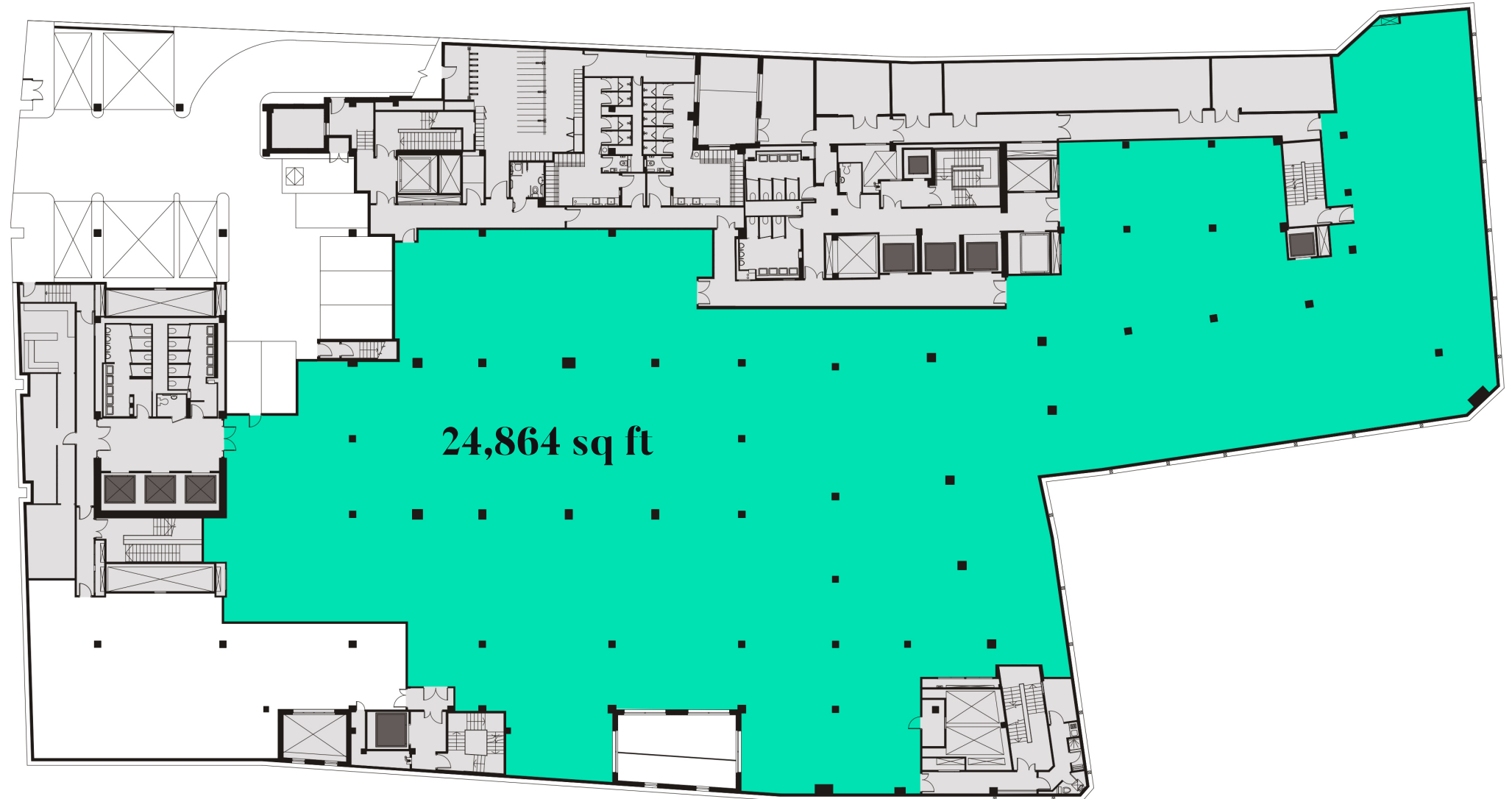
Level 0

TOTAL AREA
24,864 SQ FT (2,310 SQ M)

KEY ● VINTNERS PLACE ● CORE ● LIFT



RIVER THAMES



UPPER THAMES STREET

Floor plans not to scale, for indicative purposes only.

Including proposed shower and cycle facilities.

VINTNERS PLACE



LEVEL 5 - TMT LAYOUT

| WORK POINTS | |
|----------------------------|-----|
| Fixed desk standard | 240 |
| Non fixed desk | 18 |
| 1 Person focus booth seats | 8 |
| 2 Person focus booth seats | 20 |
| TOTAL WORK POINTS | 286 |

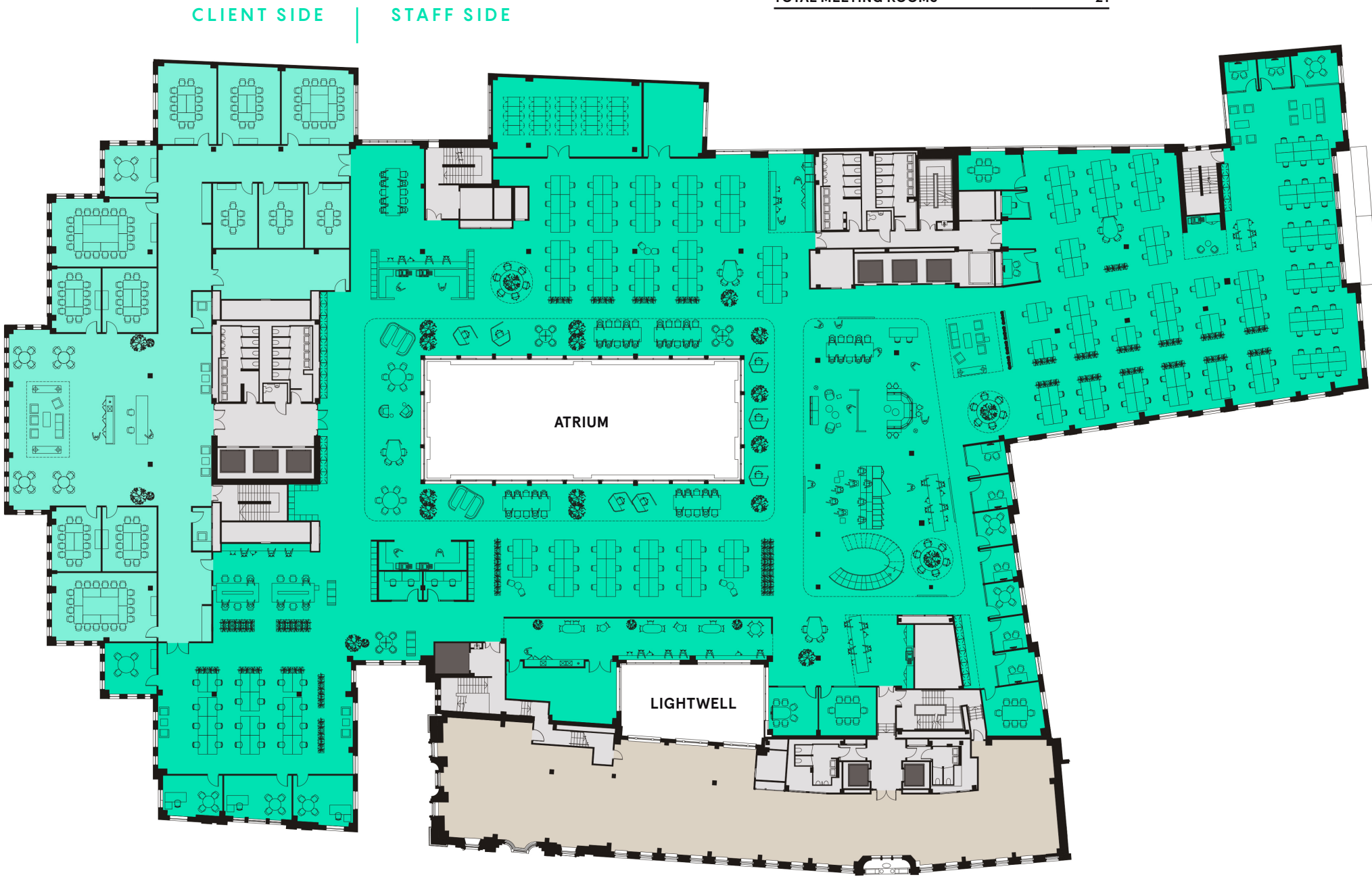
| MEETING ROOMS | |
|---------------------|----|
| 4 person | 5 |
| 6 person | 5 |
| 8 person | 2 |
| 12 person | 6 |
| 14 person | 1 |
| 20 person | 2 |
| TOTAL MEETING ROOMS | 21 |

| TOTAL AREA | |
|---------------|--------------|
| Work area | 34,749 sq ft |
| Meeting suite | 9,311 sq ft |
| 1:10 desks | 322 |
| TOTAL AREA | 44,060 sq ft |

Space Plan



RIVER THAMES



UPPER THAMES STREET

Floor plans not to scale, for indicative purposes only.

● 4,515 sq ft (419 sq m) available



LEVEL 5 - FINANCIAL SERVICES

| WORK POINTS | |
|----------------------------|-----|
| Fixed desk standard | 248 |
| Fixed desk trading | 130 |
| 1 Person focus booth seats | 13 |
| 2 Person focus booth seats | 18 |
| TOTAL WORK POINTS | 409 |

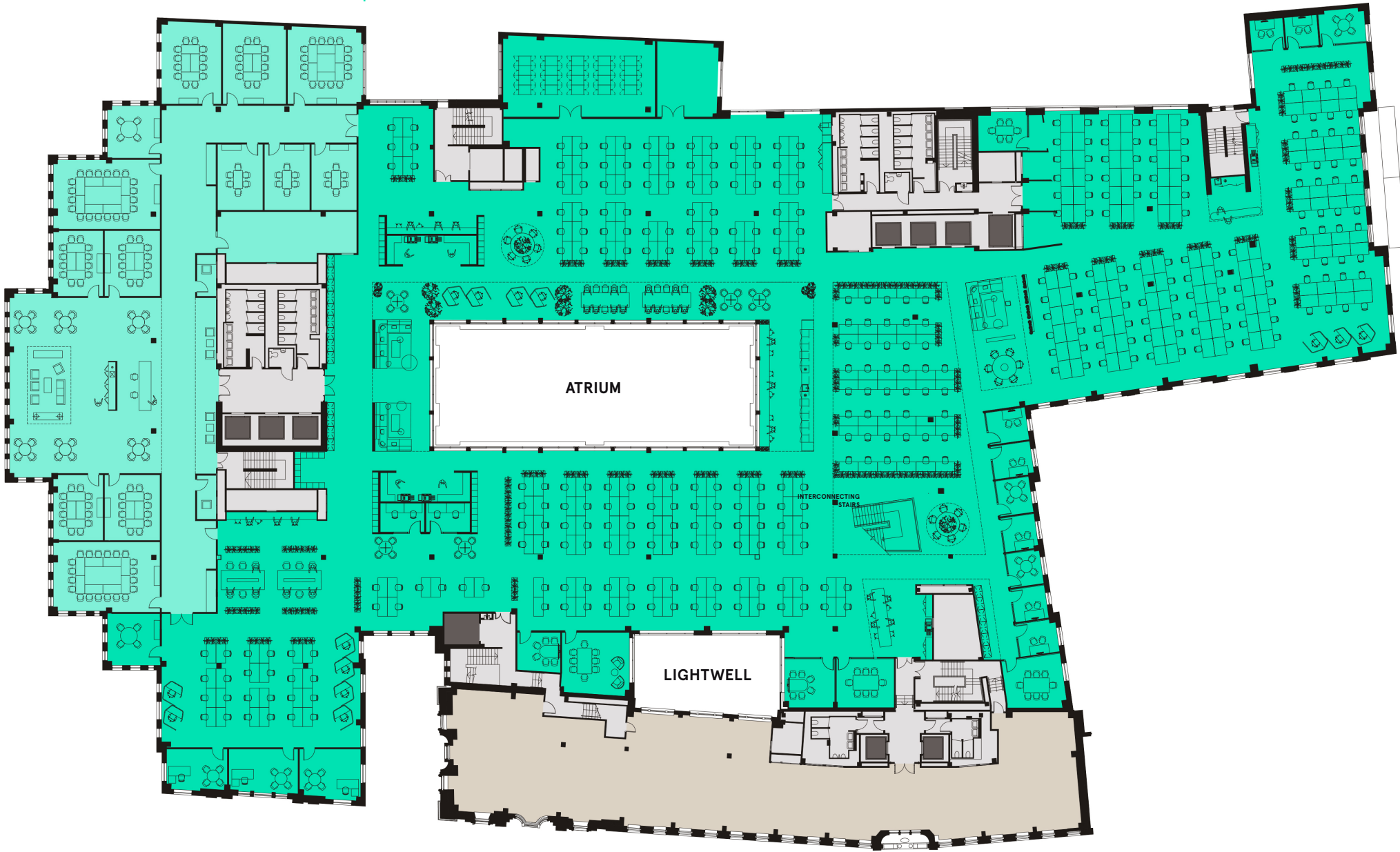
| MEETING ROOMS | |
|---------------------|----|
| 4 person | 5 |
| 6 person | 6 |
| 8 person | 2 |
| 12 person | 6 |
| 14 person | 1 |
| 20 person | 2 |
| TOTAL MEETING ROOMS | 22 |

| TOTAL AREA | |
|---------------|--------------|
| Work area | 34,749 sq ft |
| Meeting suite | 9,311 sq ft |
| 1:8 desks | 403 |
| TOTAL AREA | 44,060 sq ft |

Space Plan

RIVER THAMES

CLIENT SIDE | STAFF SIDE



UPPER THAMES STREET

Floor plans not to scale, for indicative purposes only.



LEVEL 6 - TMT LAYOUT

| WORK POINTS | |
|----------------------------|-----|
| Fixed desk standard | 112 |
| Non fixed desk | 12 |
| 1 Person focus booth seats | 1 |
| 2 Person focus booth seats | 14 |
| TOTAL WORK POINTS | 139 |

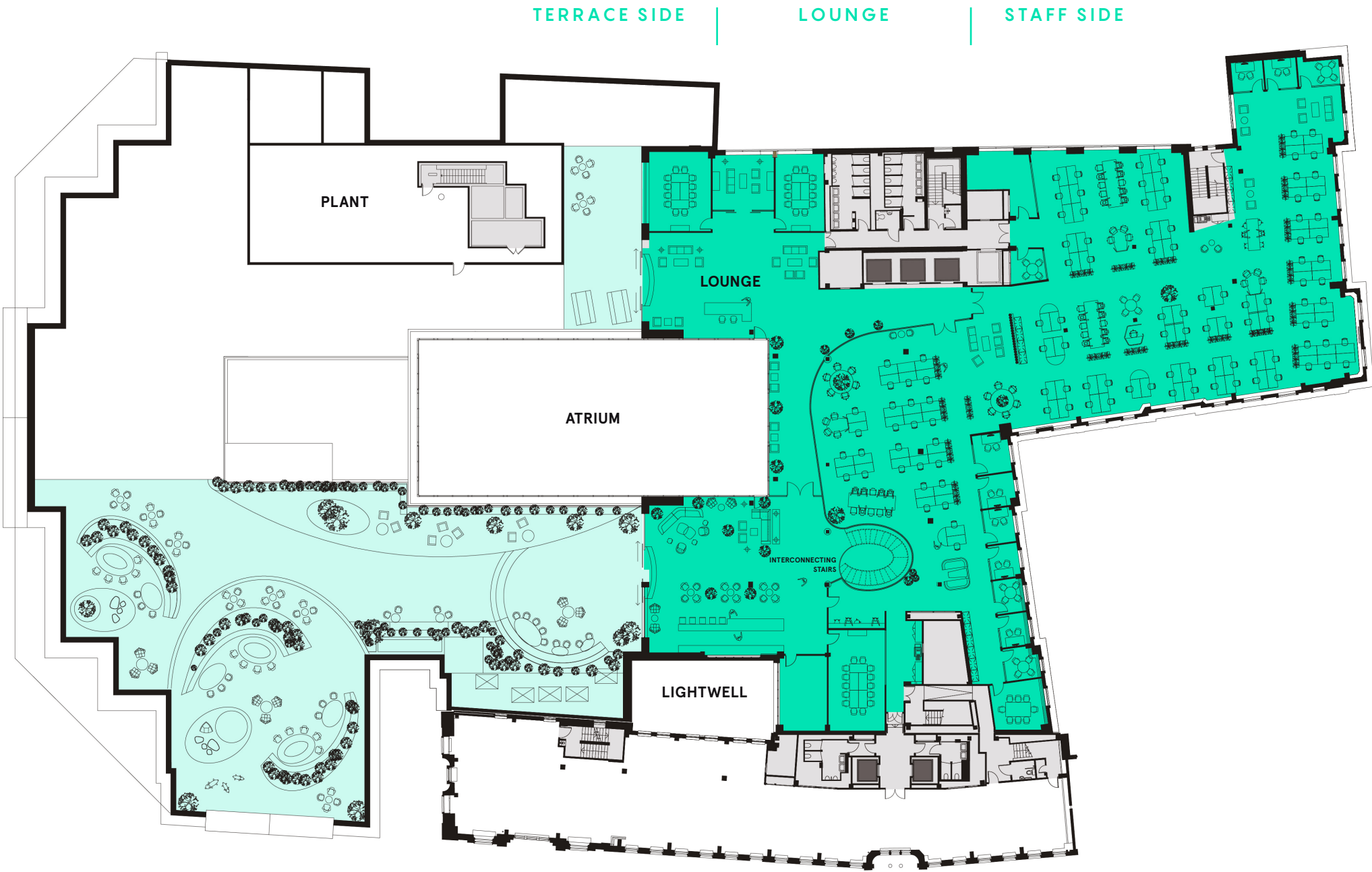
| MEETING ROOMS | |
|---------------------|---|
| 4 person | 4 |
| 8 person | 1 |
| 12 person | 2 |
| 14 person | 1 |
| TOTAL MEETING ROOMS | 8 |

| TOTAL AREA | |
|------------------|--------------|
| Work area | 12,465 sq ft |
| Meeting suite | 4,262 sq ft |
| Lounge | 2,420 sq ft |
| 1:10 work points | 115 |
| TOTAL AREA | 19,147 sq ft |

Space Plan



RIVER THAMES



TERRACE SIDE

LOUNGE

STAFF SIDE

UPPER THAMES STREET

Floor plans not to scale, for indicative purposes only.



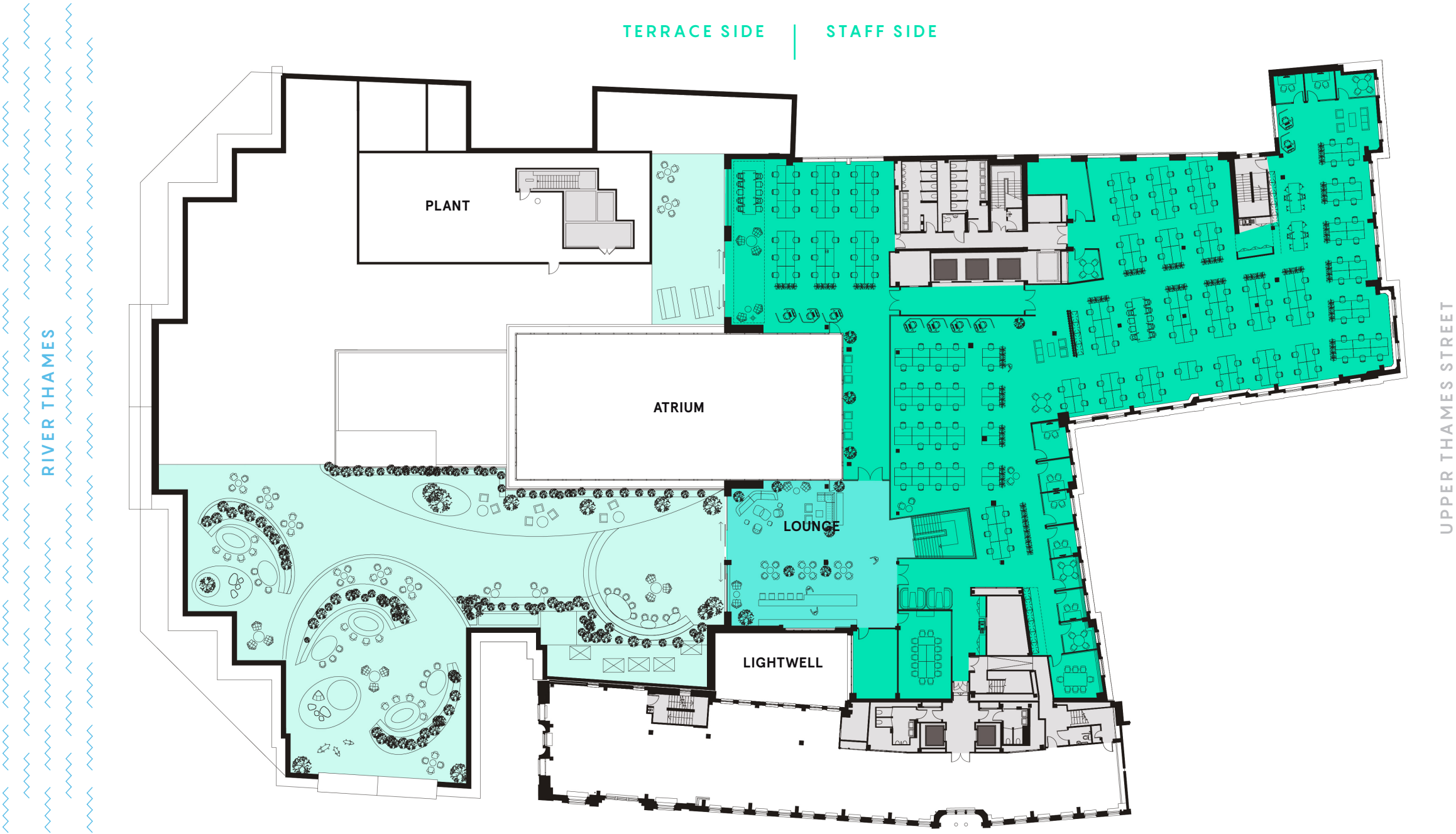
Space Plan

LEVEL 6 - FINANCIAL SERVICES

| WORK POINTS | |
|----------------------------|-----|
| Fixed desk standard | 185 |
| 1 Person focus booth seats | 8 |
| 2 Person focus booth seats | 14 |
| TOTAL WORK POINTS | 207 |

| MEETING ROOMS | |
|---------------------|---|
| 4 person | 4 |
| 8 person | 1 |
| 14 person | 1 |
| TOTAL MEETING ROOMS | 6 |

| TOTAL AREA | |
|-----------------|--------------|
| Work area | 16,727 sq ft |
| Lounge | 2,420 sq ft |
| 1:8 work points | 194 |
| TOTAL AREA | 19,147 sq ft |



Floor plans not to scale, for indicative purposes only.

The Terrace



Indicative CGI of roof terrace looking north east

Level 6



Indicative tenants' fit out



The View



Indicative CGI of Level 6 terrace looking West

The Garden



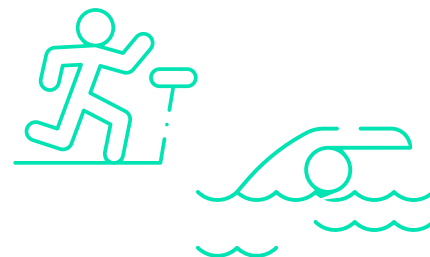
Indicative CGI of Level 6 terrace looking South

The details



- | | | |
|---|--|---|
|  | New 4-pipe fan air conditioning |  |
|  | New LED lighting |  |
|  | New CAT A ceiling solution |  |
|  | 2.8m floor to ceiling heights |  |
|  | New raised floor |  |
|  | Showers, lockers and drying facilities |  |
|  | Car parking |  |
|  | 9x passenger lifts |  |
|  | 3x good lifts |  |
|  | 4x 760 KVA standby power generation |  |

 **Reformation
coffee bar**



**Exclusive
gymnasium and
20m swimming
pool**





+ 7,000 sq ft
Roof terrace



End of trip facilities

VINTNERS PLACE WILL PROVIDE UPGRADED
END OF TRIP FACILITIES TO SUIT THE NEEDS
OF THE MODERN OCCUPIER.

 **38 bike racks**
and 4 lockers for folding bikes

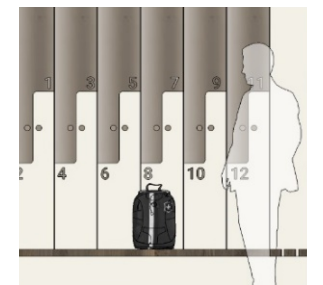
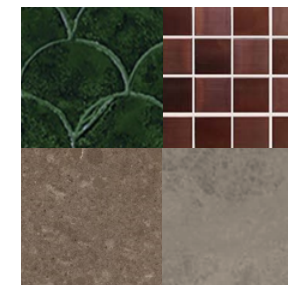
 **18 showers**
across male and female facilities
including 1 disabled shower

 **138 lockers**
across male, female and bike facilities

 **2 drying lockers**

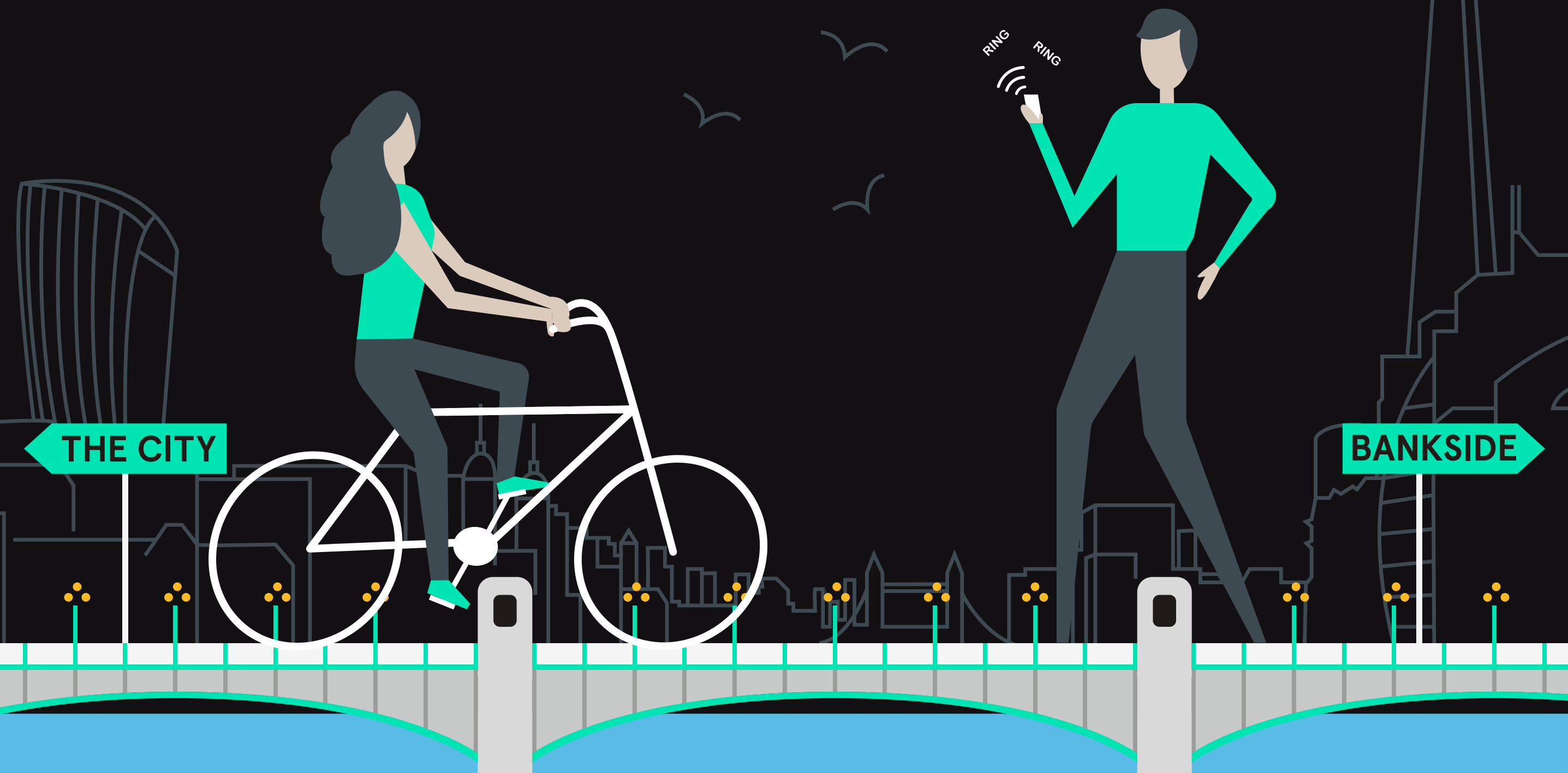


“
Cycling to work has never
been easier with brand
new spa like facilities to
kickstart your day
”



The Location

THE UNIQUE LOCATION ON
SOUTHWARK BRIDGE MAKES VINTNERS PLACE
A TRUE CENTRAL LONDON BUILDING





BANK OF ENGLAND

THE NED

THE LEADENHALL BUILDING

BANK

BLOOMBERG PLACE

MANSION HOUSE

20 FENCHURCH STREET

TOWER BRIDGE

CANNON STREET

LONDON BRIDGE

LONDON BRIDGE

THE SHARD

BOROUGH MARKET





Bloomberg Place



Paternoster Square



Le Coq d'Argent



Fortnum & Mason at Royal Exchange



The Ned London



Bow Lane



One New Change

VINTNERS PLACE



City Lifestyle

THE WEALTH OF OPTIONS
ON YOUR DOORSTEP



SOUTHWARK BRIDGE



THE GLOBE THEATRE

TATE MODERN

MILLENNIUM BRIDGE

WATERLOO STATION

LONDON EYE

BLACKFRIARS BRIDGE

BLACKFRIARS STATION

ONE NEW CHANGE

ST PAUL'S CATHEDRAL

VINTNERS PLACE



Tate Modern



Padella



Shakespeare's Globe



Borough Market

Bankside Lifestyle

A SHORT TRIP OVER THE BRIDGE
TAKES YOU INTO A WORLD FULL
OF CULTURE AND AMENITY

VINTNERS PLACE

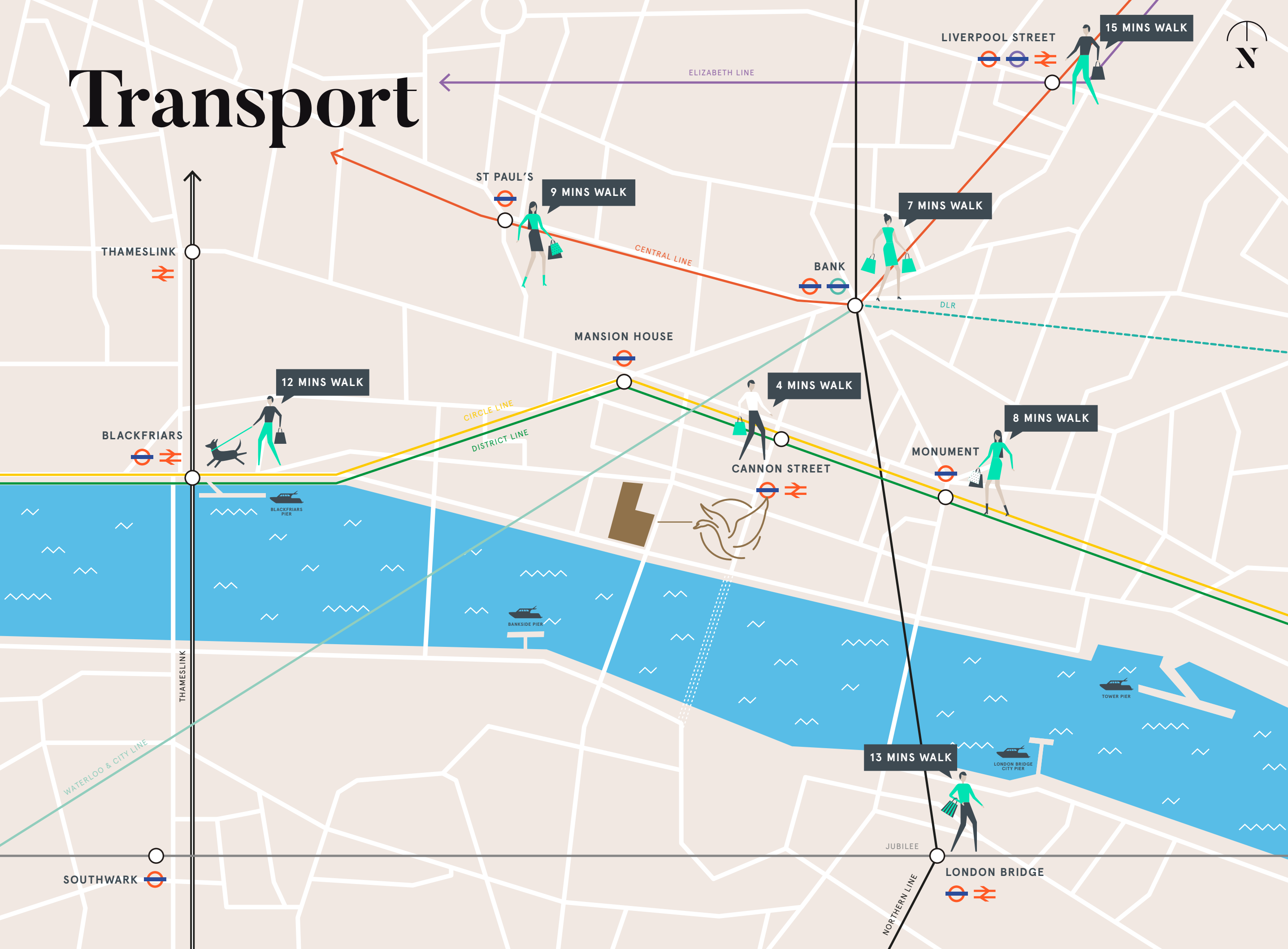




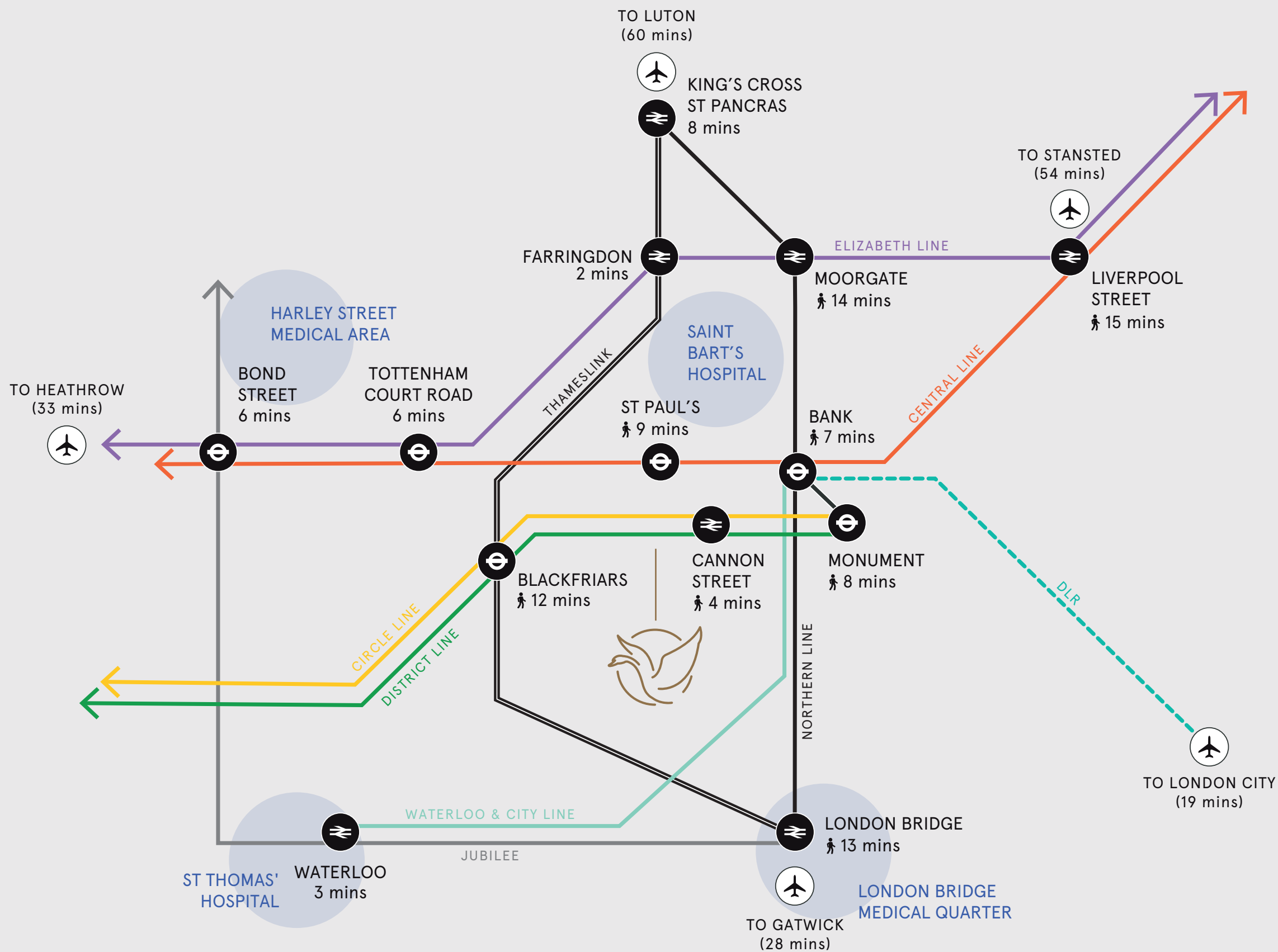
Local Occupiers

Local Amenities

Transport



Transport Map



Professional Team

ASSET MANAGER



ARCHITECT

tp bennett

LEASING TEAM AND CONTACTS

BH₂

020 7600 5000

 **CUSHMAN &
WAKEFIELD**

020 3296 3000

CALLUM STIDSTON-NOTT

Direct: +44 (0)20 7710 7962
Mobile: +44 (0)7557 386 038
Email: callums@bh2.co.uk

DAN ROBERTS

Direct: +44 (0)20 7710 7958
Mobile: +44 (0)7801 143 909
Email: danr@bh2.co.uk

ALISTAIR BROWN

Direct: +44 (0)20 3296 2007
Mobile: +44 (0)7771 527 350
Email: alistair.brown@cushwake.com

TOM FAYERS

Direct: +44 (0)20 3296 4226
Mobile: +44 (0)7973 821 247
Email: tom.fayers@cushwake.com

JAMES CAMPBELL

Direct: +44 (0)20 3296 2074
Mobile: +44 (0)7738 737 366
Email: james.campbell@cushwake.com

DISCLAIMER: All areas are approximate, measured in according with RICS Code of measuring practice 6th edition. The building may present anomalies in relation to survey/drawn plans. This information must not be relied upon to form the basis of any offer or contract. BH2 and Cushman & Wakefield on their behalf and for the Vendors or Lessors of this property whose Agents they are, give notice that: 1. These particulars are set out as a general outline only for guidance to intending Purchasers or Lessees, and do not constitute any part of an offer or contract. 2. Details are given without any responsibility and any intending Purchasers, Lessees or Third Parties should not rely on them as statements or representations of fact, but must satisfy themselves by inspection or otherwise as to the correctness of each of them. 3. No person in the employment of BH2 or Cushman & Wakefield has any authority to make any representation or warranty whatsoever in relation to this property. Subject to contract. January 2020.

Brochure designed and produced by SAENTYS | +44 (0) 20 7407 8717 | www.saentys.com | info@saentys.com

VINTNERS PLACE

VINTNERSPLACE.COM