

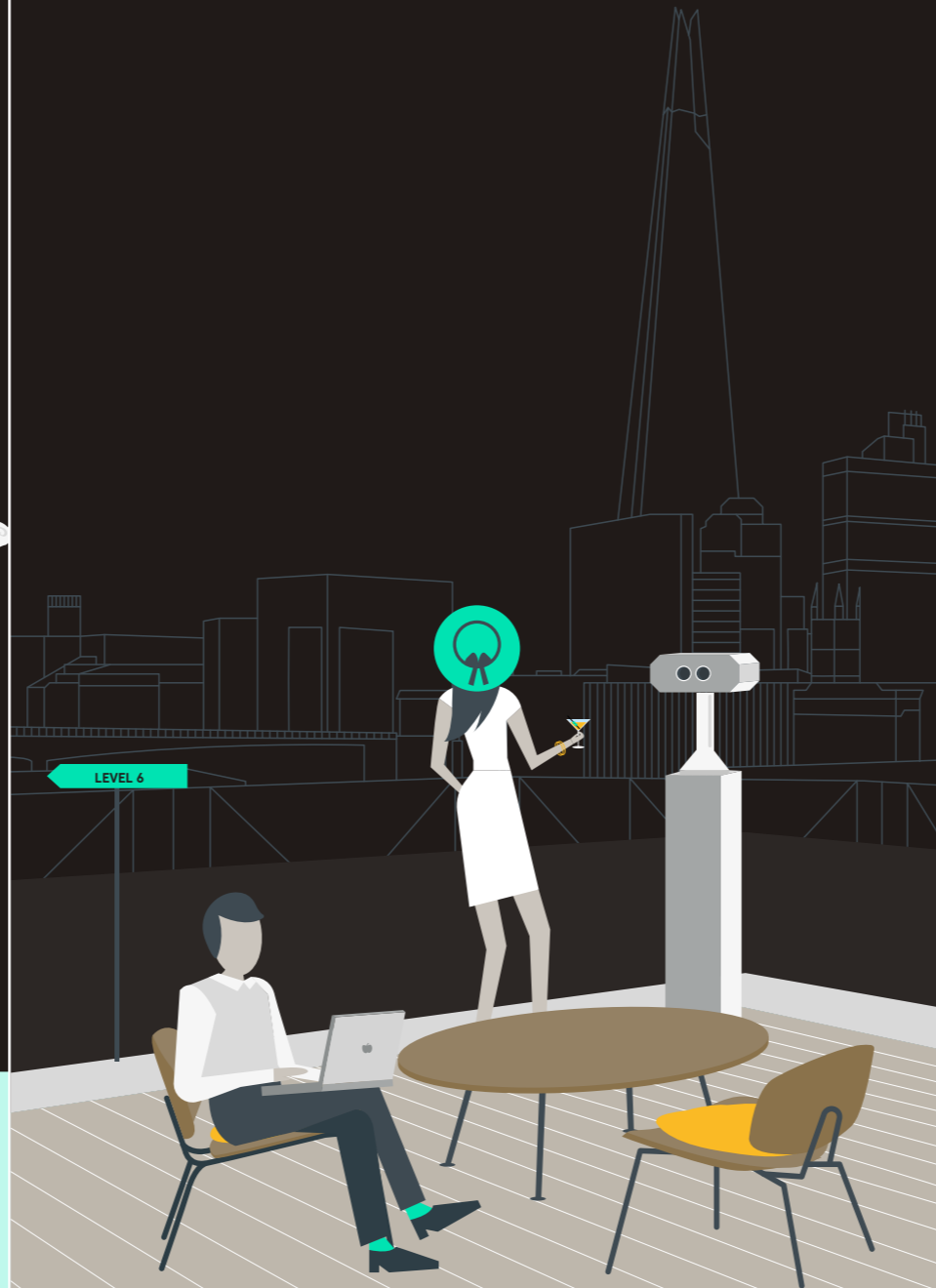


VINTNERS PLACE
LONDON

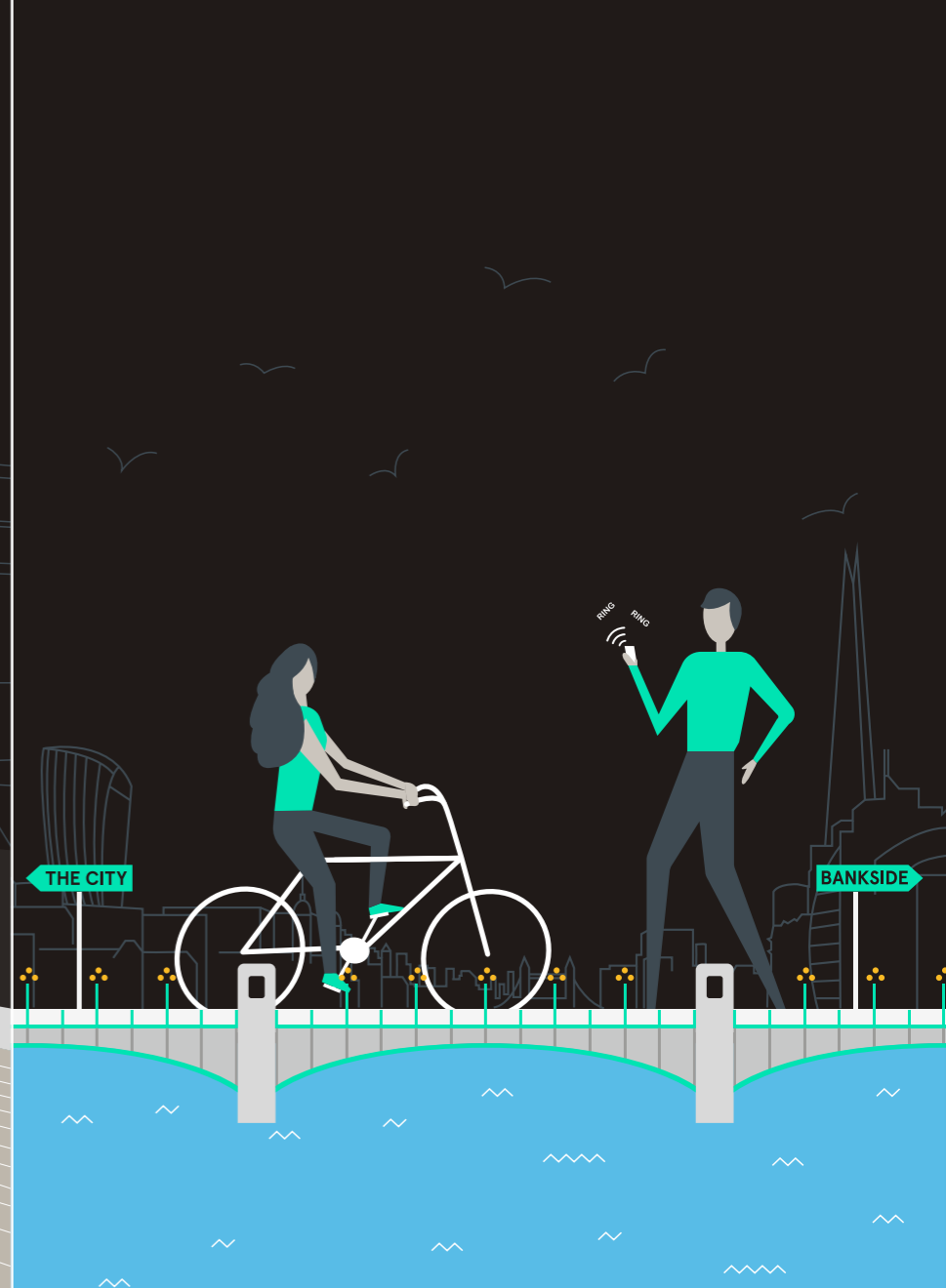
The Building



The Offer



The Location



The Building

A BEAUTIFUL BUILDING PROVIDING
A FIRST CLASS EXPERIENCE FOR ITS OCCUPIERS

COFFEE SHOP



The Building Key Facts



01

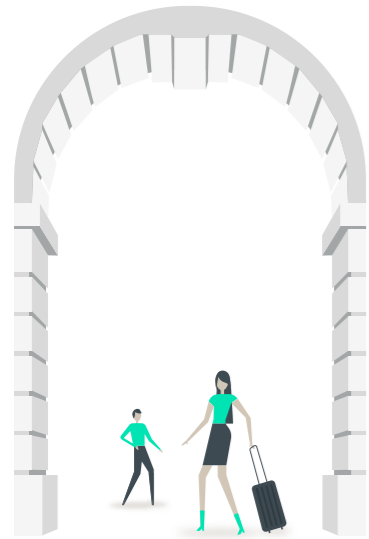
Vintners Place

is a landmark asset on the River, which combines a mix of Grade A office accommodation, leisure, fitness and retail.

02

The building comprises 275,000 sq ft

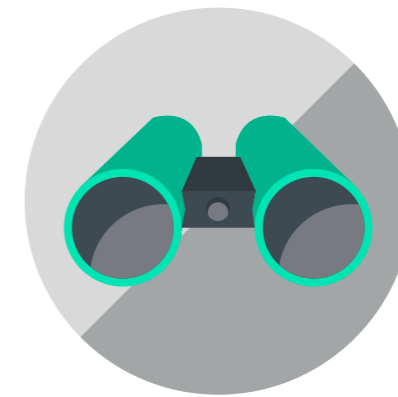
over lower ground, ground and six upper floors, centered around a large internal atrium.



05

The Atrium base

is home to a large open plan breakout area, and benefits from an onsite café.



03

Extensive roof terrace

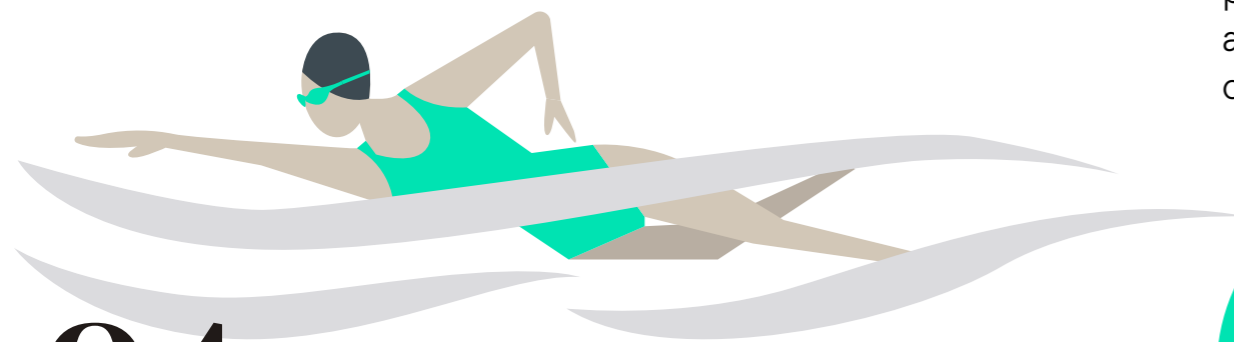
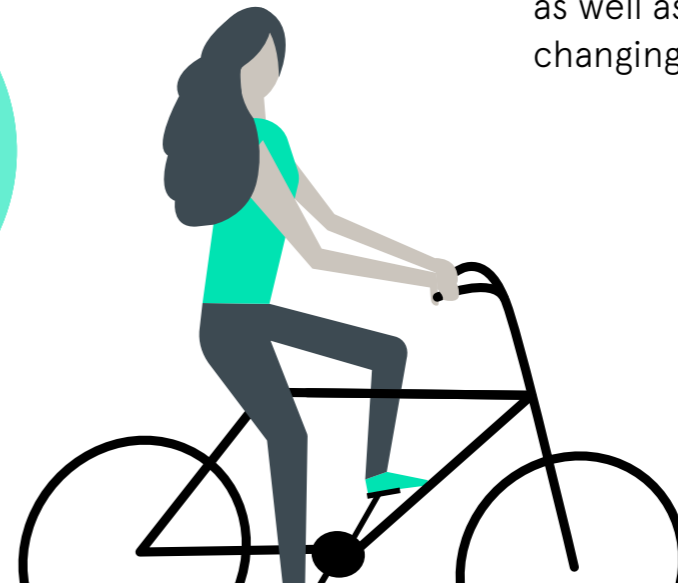
on the 6th floor that benefits from exceptional river views both East and West.



06

Cycling storage and car parking available,

as well as shower and changing rooms.



04

Exclusive gymnasium and 20m swimming pool

for sole use of the occupiers in the building.



VINTNERS PLACE

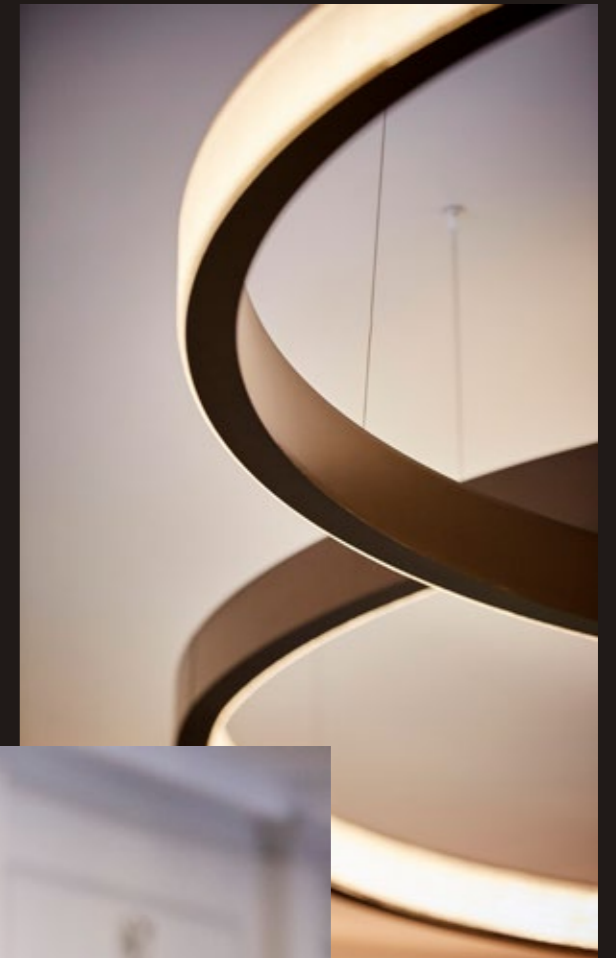
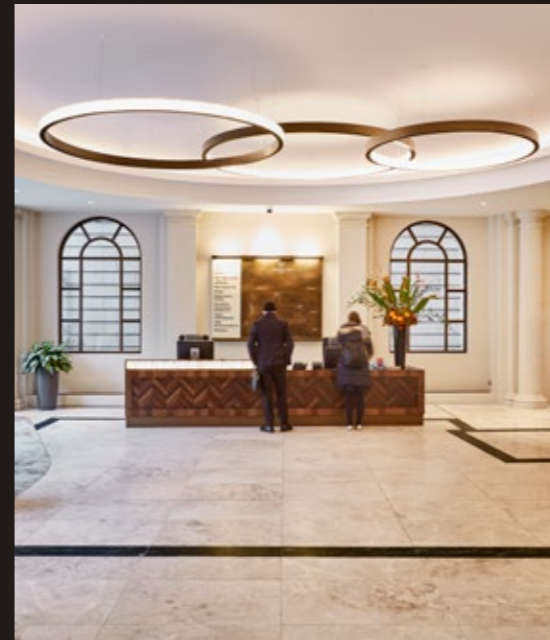
VINTNERS PLACE

VINTNERS PLACE

The Reception



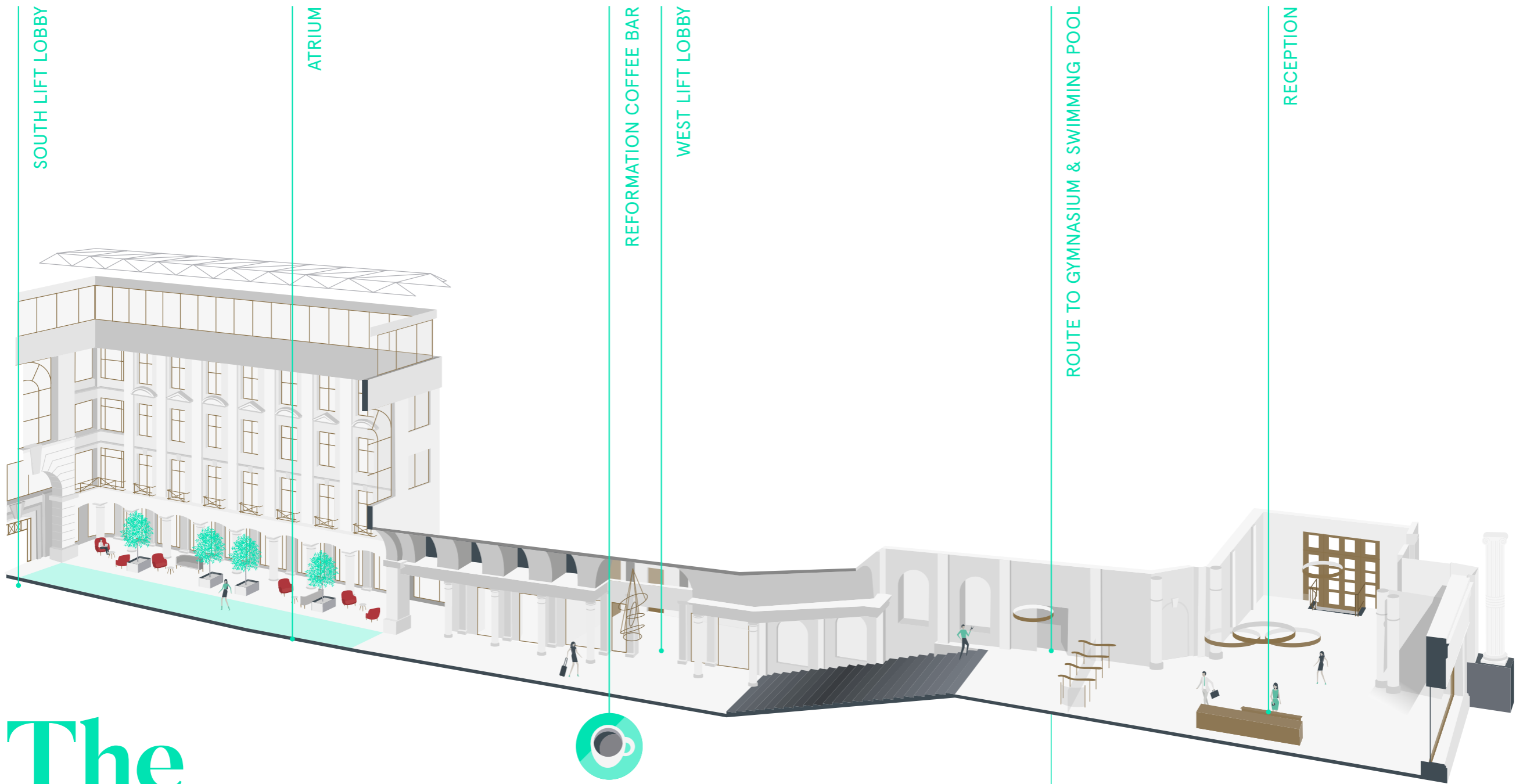
“
Recently refurbished to
a high standard, you can relax
in a welcoming atmosphere
”



The Welcome

A FRIENDLY AND PROFESSIONAL RECEPTION ENSURES A SEAMLESS VISIT FOR GUESTS AND STAFF ALIKE





The Ground Floor



GYMNASIUM



SWIMMING POOL





The Gymnasium



Reformation Coffee Bar



The Swimming Pool



The Atrium

A Unique Lifestyle

VINTNERS PLACE CAN OFFER ITS OCCUPIERS A UNIQUE WORK/LIFE BALANCE THANKS TO THE AMENITIES IN THE BUILDING



The Atrium



“
The light-flooded atrium provides the perfect location for a formal or informal meeting or a catch up with a colleague
”

Swimming Pool



“
Dive into 20m of refreshing water after a hard day in the office
”

The Terrace

UNINTERRUPTED VIEWS
FROM EAST TO WEST



Indicative CGI of Level 6 terrace looking South East

The Offer

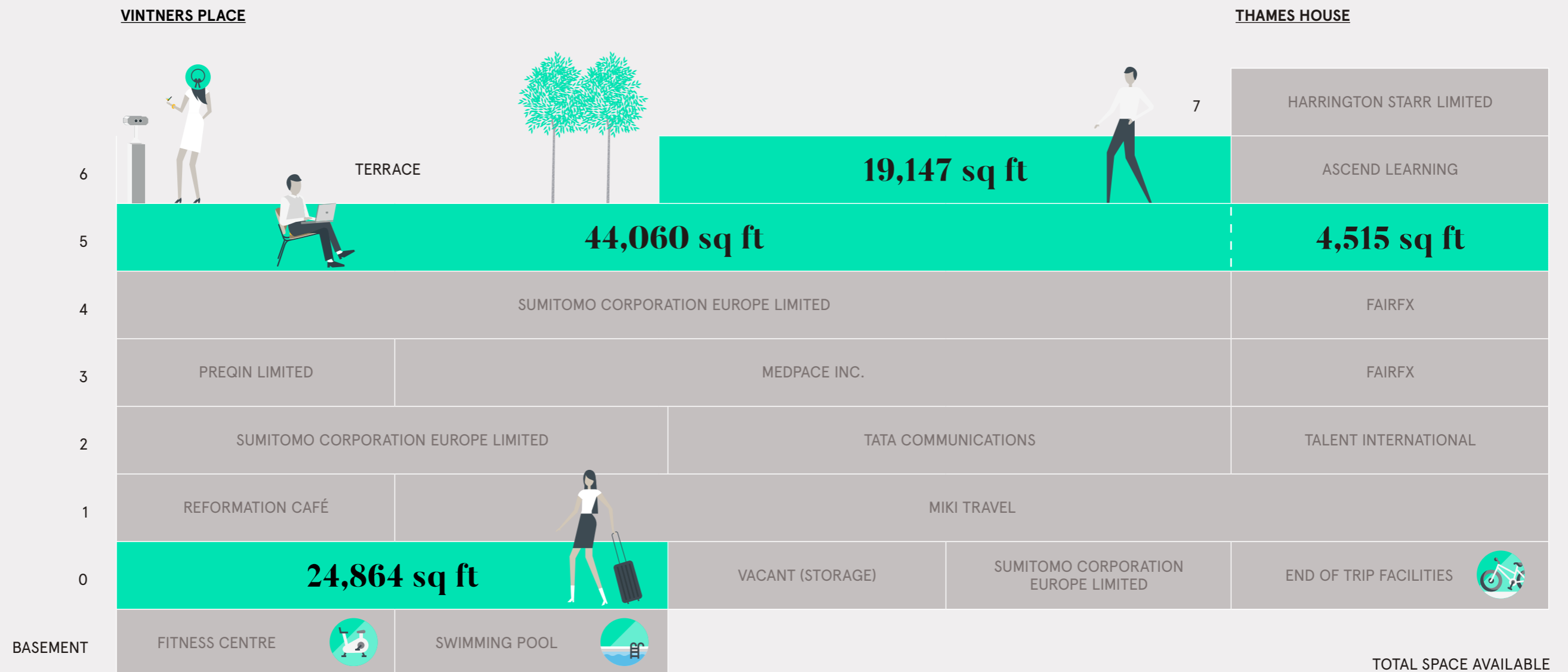
AN OPPORTUNITY TO OCCUPY HIGH QUALITY OFFICES WITH
ONE OF THE MOST ENVIABLE ROOF TERRACES IN LONDON

LEVEL 6



The Available Space

KEY ● AVAILABLE SPACE



TOTAL SPACE AVAILABLE
92,586 sq ft

A collaborative space

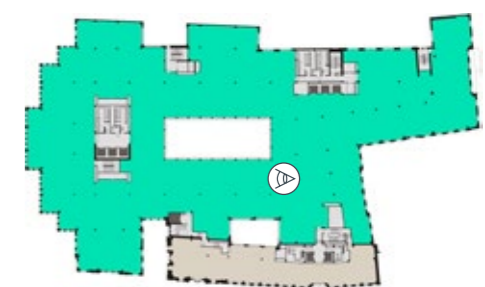


Indicative tenants' fit out

Modern Offices



Indicative tenants' fit out

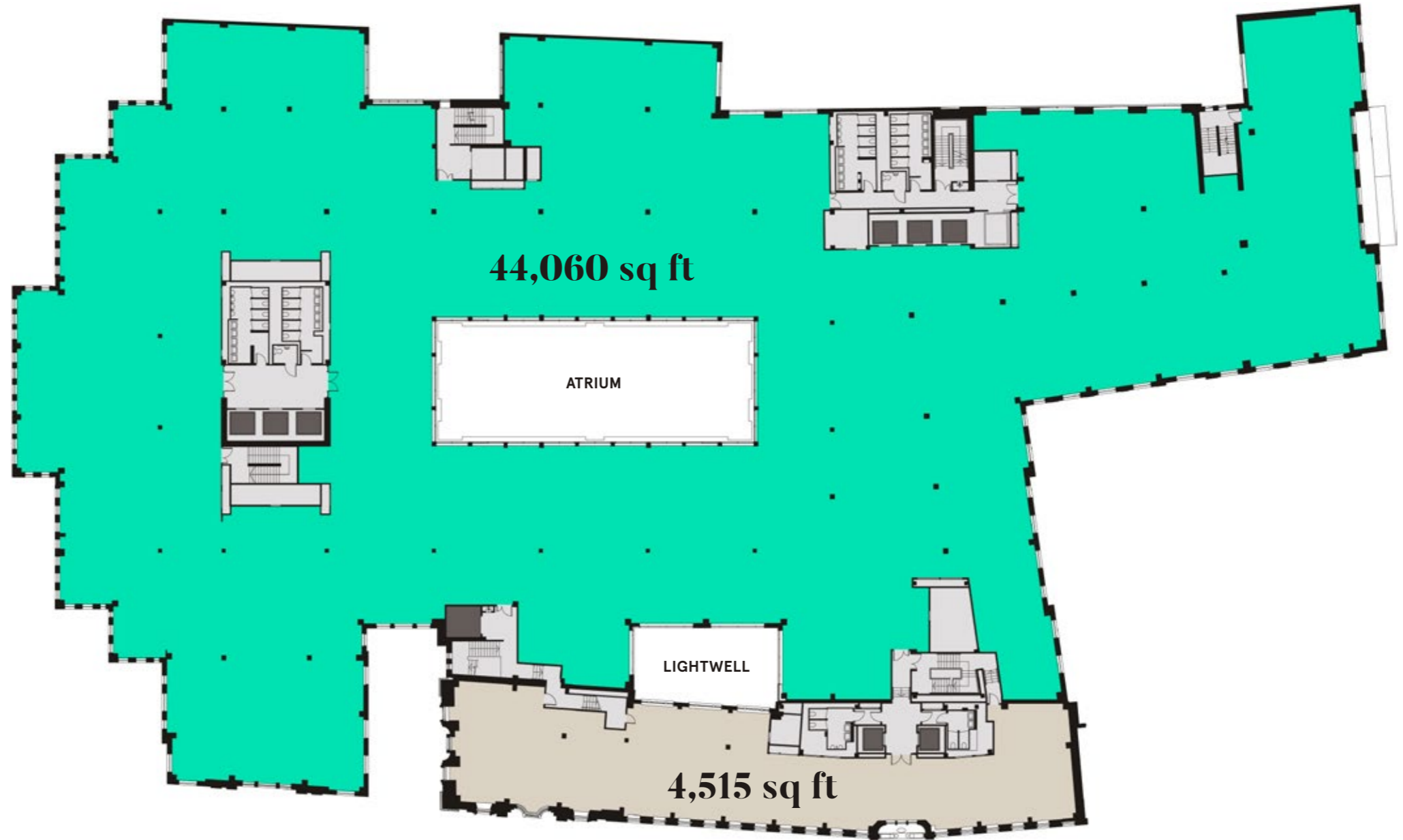




TOTAL AREA
48,575 SQ FT (4,512 SQ M)

KEY ● VINTNERS PLACE ● THAMES HOUSE ● CORE ● LIFT

Level 5



Floor plans not to scale, for indicative purposes only.

● 4,515 sq ft (419 sq m) available



TOTAL AREA
19,147 SQ FT (1,779 SQ M)

KEY ● VINTNERS PLACE ● CORE ● LIFT ● TERRACE

Level 6



RIVER THAMES



UPPER THAMES STREET

Floor plans not to scale, for indicative purposes only.



TOTAL AREA
24,864 SQ FT (2,310 SQ M)

KEY ● VINTNERS PLACE ● CORE ● LIFT

Level 0



Floor plans not to scale, for indicative purposes only.

Including proposed shower and cycle facilities.



LEVEL 5 - TMT LAYOUT

WORK POINTS

Fixed desk standard	240
Non fixed desk	18
1 Person focus booth seats	8
2 Person focus booth seats	20
TOTAL WORK POINTS	286

MEETING ROOMS

4 person	5
6 person	5
8 person	2
12 person	6
14 person	1
20 person	2
TOTAL MEETING ROOMS	21

TOTAL AREA

Work area	34,749 sq ft
Meeting suite	9,311 sq ft
1:10 desks	322
TOTAL AREA	44,060 sq ft

Space Plan



RIVER THAMES

CLIENT SIDE | STAFF SIDE



UPPER THAMES STREET

Floor plans not to scale, for indicative purposes only.

● 4,515 sq ft (419 sq m) available



LEVEL 5 - FINANCIAL SERVICES

WORK POINTS

Fixed desk standard	248
Fixed desk trading	130
1 Person focus booth seats	13
2 Person focus booth seats	18
TOTAL WORK POINTS	409

MEETING ROOMS

4 person	5
6 person	6
8 person	2
12 person	6
14 person	1
20 person	2
TOTAL MEETING ROOMS	22

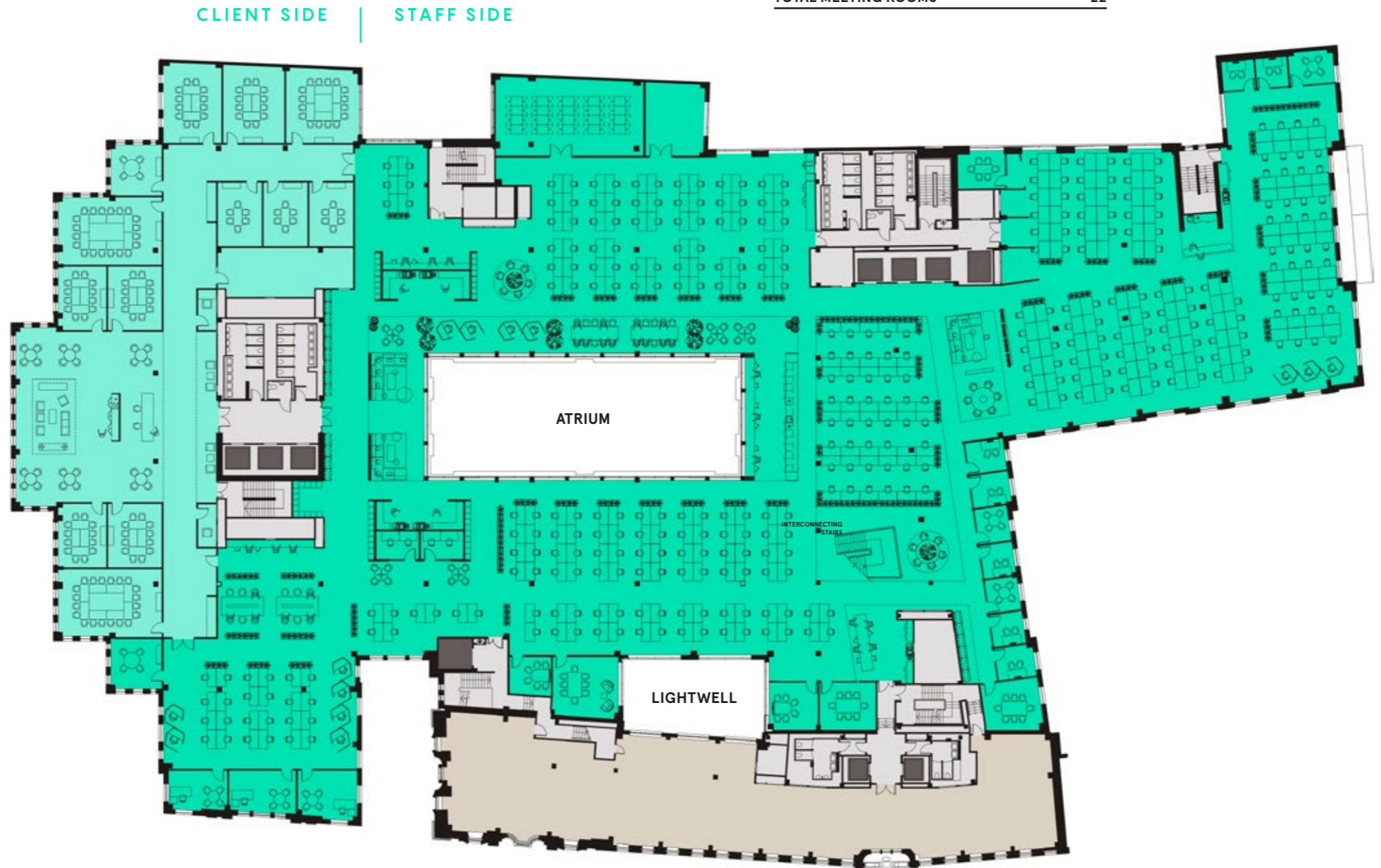
TOTAL AREA

Work area	34,749 sq ft
Meeting suite	9,311 sq ft
1:8 desks	403
TOTAL AREA	44,060 sq ft

Space Plan



RIVER THAMES



UPPER THAMES STREET

Floor plans not to scale, for indicative purposes only.

● 4,515 sq ft (419 sq m) available



LEVEL 6 - TMT LAYOUT

WORK POINTS

Fixed desk standard	112
Non fixed desk	12
1 Person focus booth seats	1
2 Person focus booth seats	14
TOTAL WORK POINTS	139

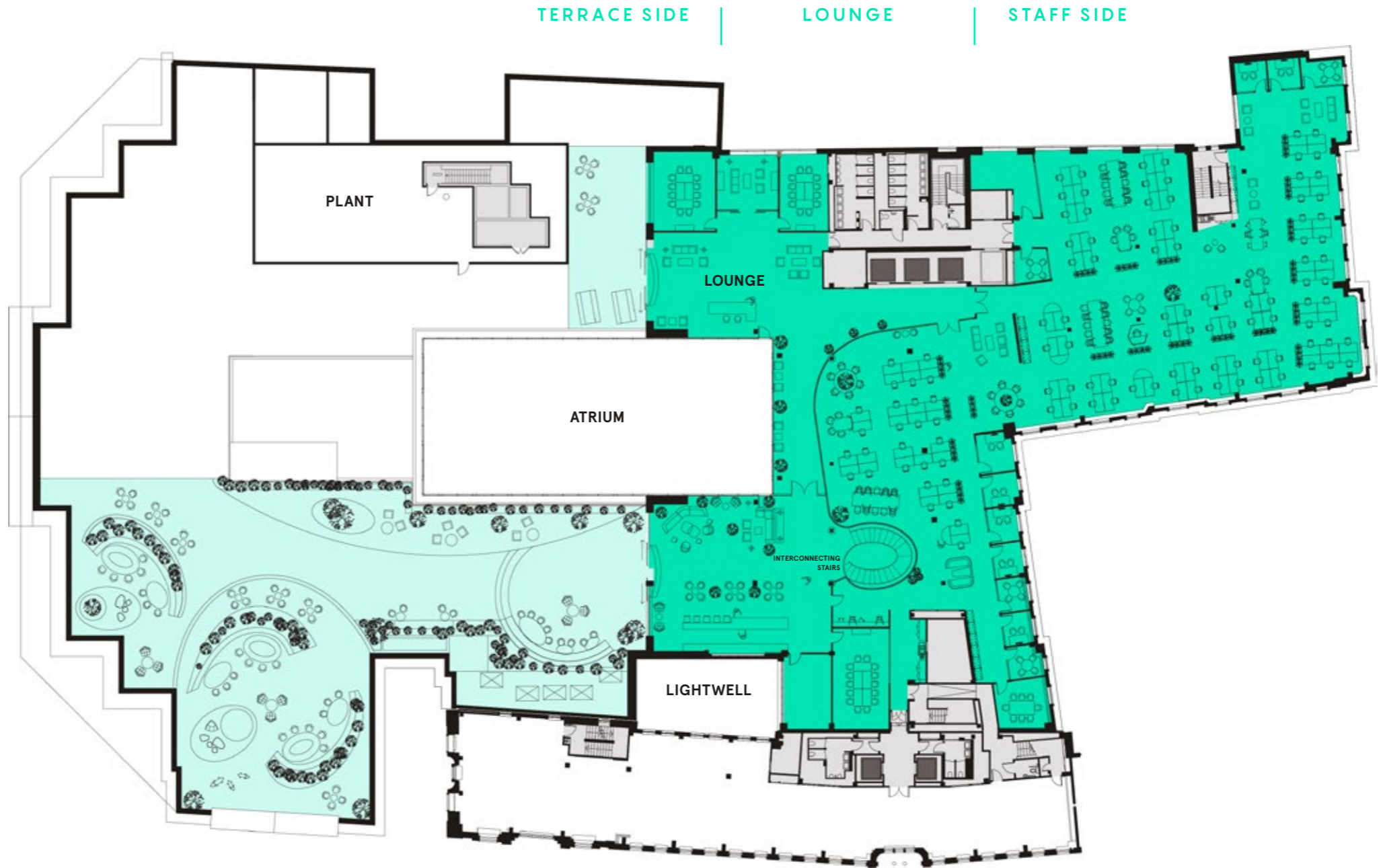
MEETING ROOMS

4 person	4
8 person	1
12 person	2
14 person	1
TOTAL MEETING ROOMS	8

TOTAL AREA

Work area	12,465 sq ft
Meeting suite	4,262 sq ft
Lounge	2,420 sq ft
1:10 work points	115
TOTAL AREA	19,147 sq ft

Space Plan



UPPER THAMES STREET

Floor plans not to scale, for indicative purposes only.



LEVEL 6 - FINANCIAL SERVICES

WORK POINTS

Fixed desk standard	185
1 Person focus booth seats	8
2 Person focus booth seats	14
TOTAL WORK POINTS	207

MEETING ROOMS

4 person	4
8 person	1
14 person	1
TOTAL MEETING ROOMS	6

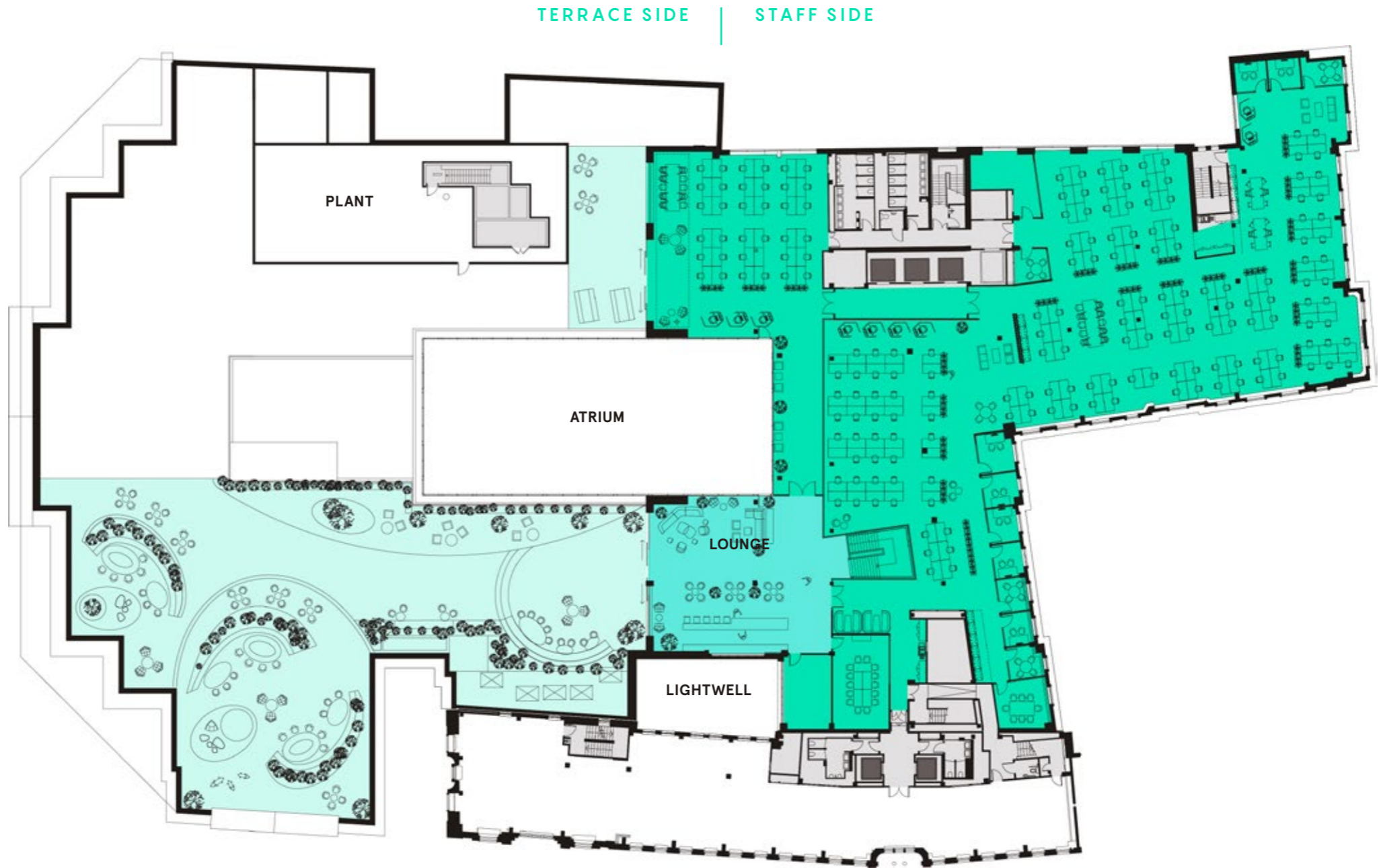
TOTAL AREA

Work area	16,727 sq ft
Lounge	2,420 sq ft
1:8 work points	194
TOTAL AREA	19,147 sq ft

Space Plan



RIVER THAMES



UPPER THAMES STREET

Floor plans not to scale, for indicative purposes only.

The Terrace



Indicative CGI of roof terrace looking north east

Level 6



Indicative tenants' fit out



The View



Indicative CGI of Level 6 terrace looking West

The Garden



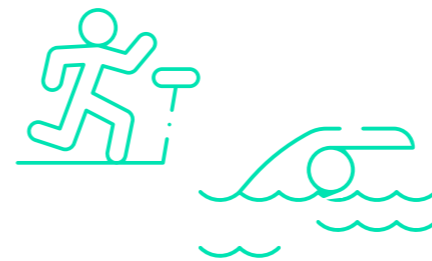
Indicative CGI of Level 6 terrace looking South

The details



-  **New 4-pipe**
fan air conditioning ✓
-  **New LED lighting** ✓
-  **New CAT A**
ceiling solution ✓
-  **2.8m**
floor to ceiling heights ✓
-  **New raised floor** ✓
-  **Showers, lockers**
and drying facilities ✓
-  **Car parking** ✓
-  **9x passenger lifts** ✓
-  **3x good lifts** ✓
-  **4x 760 KVA**
standby power generation ✓

 **Reformation**
coffee bar



Exclusive
gymnasium and
20m swimming
pool




+ 7,000 sq ft
Roof terrace



End of trip facilities

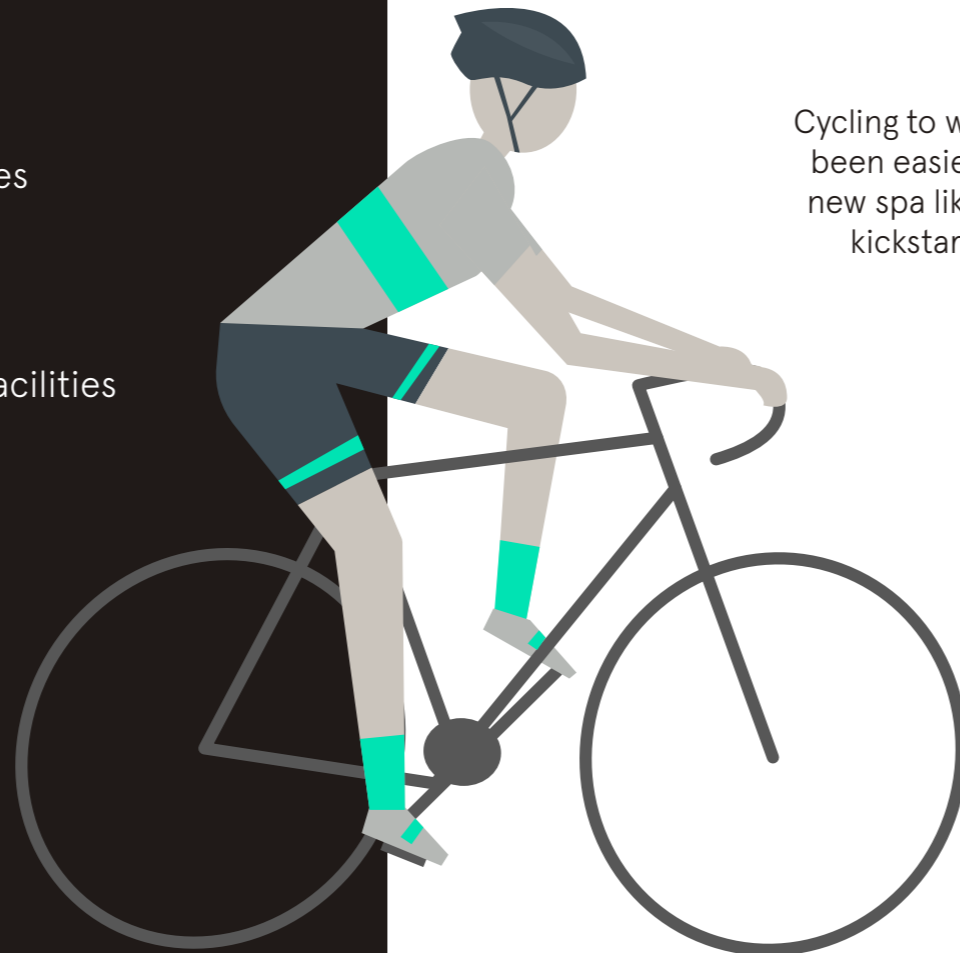
VINTNERS PLACE WILL PROVIDE UPGRADED END OF TRIP FACILITIES TO SUIT THE NEEDS OF THE MODERN OCCUPIER.

 **38 bike racks**
and 4 lockers for folding bikes

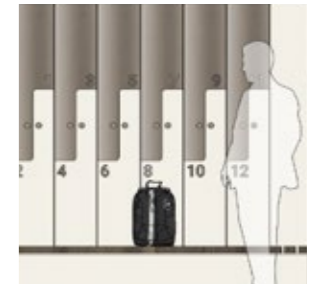
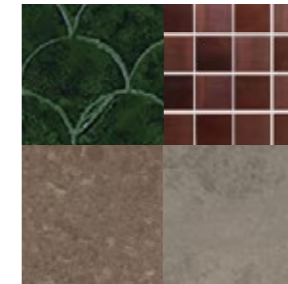
 **18 showers**
across male and female facilities including 1 disabled shower

 **138 lockers**
across male, female and bike facilities

 **2 drying lockers**

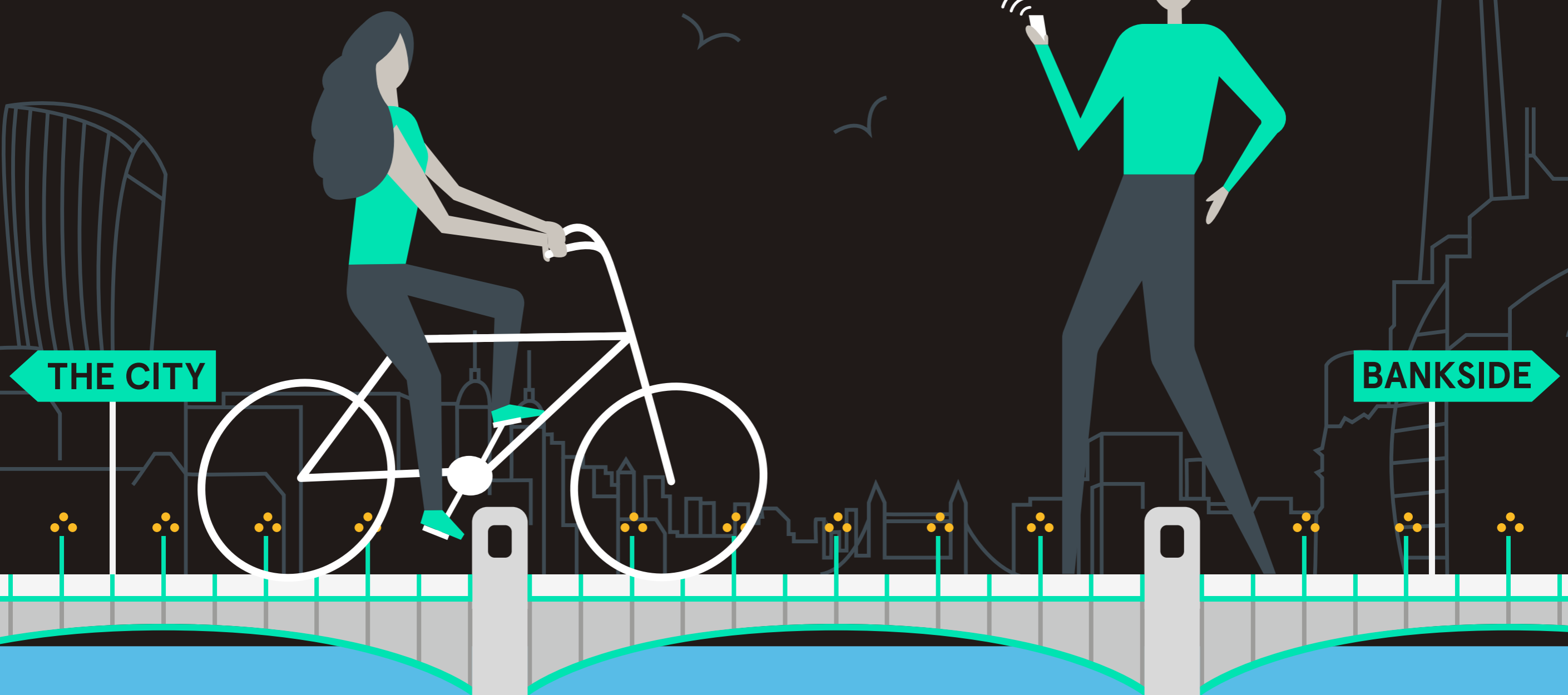


“
Cycling to work has never been easier with brand new spa like facilities to kickstart your day
”



The Location

THE UNIQUE LOCATION ON
SOUTHWARK BRIDGE MAKES VINTNERS PLACE
A TRUE CENTRAL LONDON BUILDING





BANK OF ENGLAND

THE NED

THE LEADENHALL BUILDING

BANK

BLOOMBERG PLACE

MANSION HOUSE

20 FENCHURCH STREET

TOWER BRIDGE

CANNON STREET

LONDON BRIDGE

LONDON BRIDGE

THE SHARD

BOROUGH MARKET





Bloomberg Place



Paternoster Square



Le Coq d'Argent



Fortnum & Mason at Royal Exchange



The Ned London



Bow Lane



One New Change



City Lifestyle

THE WEALTH OF OPTIONS
ON YOUR DOORSTEP



SOUTHWARK BRIDGE



THE GLOBE THEATRE

TATE MODERN

MILLENNIUM BRIDGE

WATERLOO STATION



LONDON EYE

BLACKFRIARS BRIDGE

BLACKFRIARS STATION



ONE NEW CHANGE

ST PAUL'S CATHEDRAL

VINTNERS PLACE



Tate Modern



Padella



Shakespeare's Globe



Borough Market

Bankside Lifestyle

A SHORT TRIP OVER THE BRIDGE
TAKES YOU INTO A WORLD FULL
OF CULTURE AND AMENITY

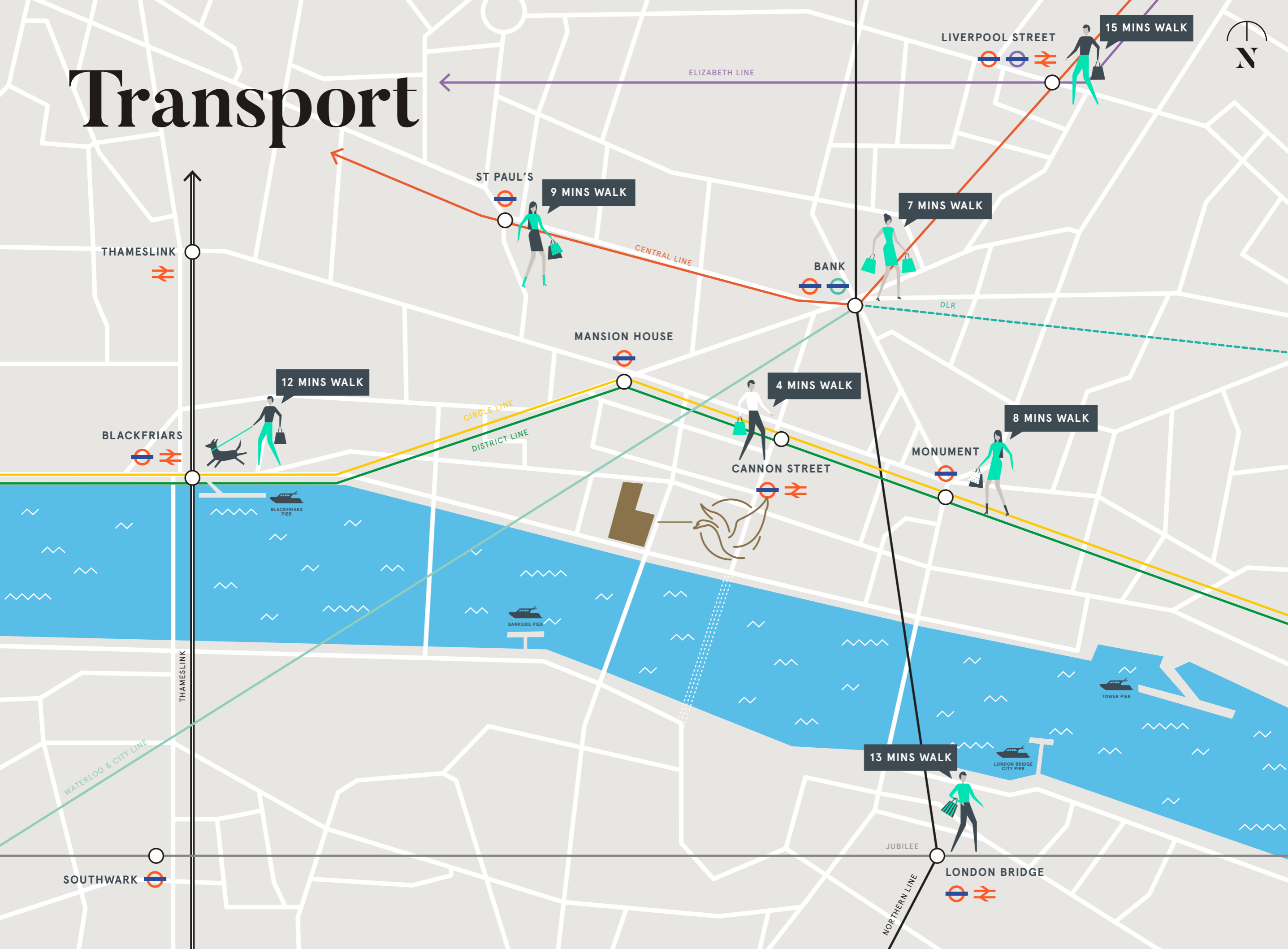


VINTNERS PLACE

Local Amenities

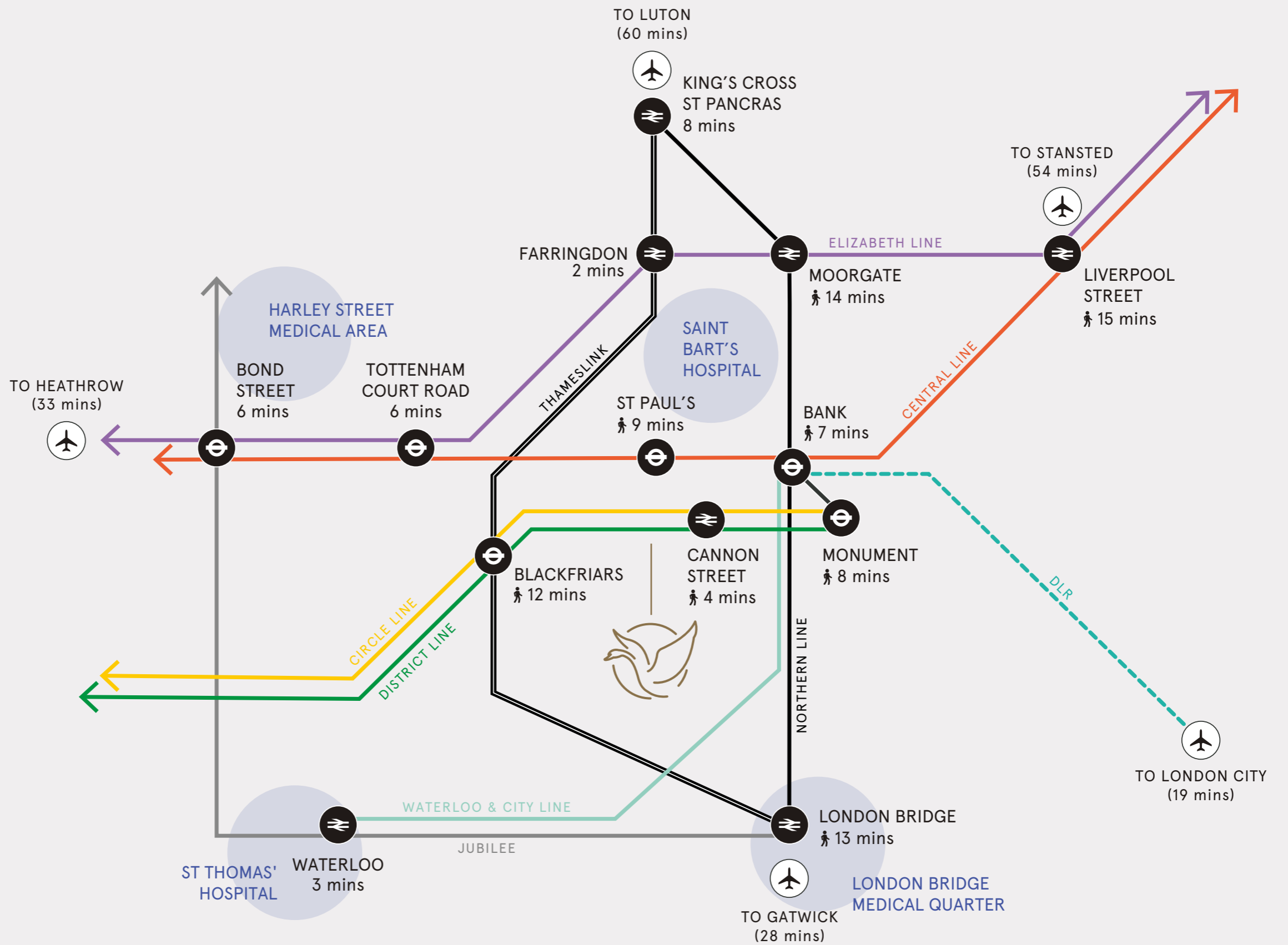


Transport





Transport Map



Professional Team

ASSET MANAGER



ARCHITECT

tp bennett

LEASING TEAM AND CONTACTS

BH₂

020 7600 5000



020 3296 3000

CALLUM STIDSTON-NOTT

Direct: +44 (0)20 7710 7962
Mobile: +44 (0)7557 386 038
Email: callums@bh2.co.uk

DAN ROBERTS

Direct: +44 (0)20 7710 7958
Mobile: +44 (0)7801 143 909
Email: danr@bh2.co.uk

ALISTAIR BROWN

Direct: +44 (0)20 3296 2007
Mobile: +44 (0)7771 527 350
Email: alistair.brown@cushwake.com

TOM FAYERS

Direct: +44 (0)20 3296 4226
Mobile: +44 (0)7973 821 247
Email: tom.fayers@cushwake.com

JAMES CAMPBELL

Direct: +44 (0)20 3296 2074
Mobile: +44 (0)7738 737 366
Email: james.campbell@cushwake.com

DISCLAIMER: All areas are approximate, measured in accordance with RICS Code of measuring practice 6th edition. The building may present anomalies in relation to survey/drawn plans. This information must not be relied upon to form the basis of any offer or contract. BH2 and Cushman & Wakefield on their behalf and for the Vendors or Lessors of this property whose Agents they are, give notice that: 1. These particulars are set out as a general outline only for guidance to intending Purchasers or Lessees, and do not constitute any part of an offer or contract. 2. Details are given without any responsibility and any intending Purchasers, Lessees or Third Parties should not rely on them as statements or representations of fact, but must satisfy themselves by inspection or otherwise as to the correctness of each of them. 3. No person in the employment of BH2 or Cushman & Wakefield has any authority to make any representation or warranty whatsoever in relation to this property. Subject to contract. January 2020.

Brochure designed and produced by SAENTYS | +44 (0) 20 7407 8717 | www.saentys.com | info@saentys.com

VINTNERS PLACE

VINTNERSPLACE.COM